

ersonal use only

**native**  
**mineral**  
**resources**



# Investor Presentation

*August 2022*

*Multiple Opportunities for Copper and  
Gold Discoveries in WA and QLD*

ASX:NMR

# Corporate and Management Snapshot



**Blake Cannavo**  
Managing Director & CEO



**James Walker**  
Independent Non-Exec  
Chair



**Philip Gardner**  
Independent Non-Exec  
Director



**Marika White**  
Company Secretary



**Dr. Simon Richards**  
Chief Geologist



**Peter Tamaduk**  
Senior Geologist



**Andrew Chung**  
Project Services  
Manager



**David Pensini**  
General Manager



**Chris Jacobs**  
Chief Financial Officer

**NMR**  
ASX Code

**\$0.12**  
\*Share Price

**100.95m**  
\*Shares on Issue

**\$12.2m**  
\*Market Cap

\* As at 22<sup>nd</sup> Aug 2022

ersonal use only

# Investor highlights

**Metals-focused** - NMR is exploring for critical commodities including copper, nickel, gold, REE, PGE, cobalt and lithium in WA and QLD and is already achieving short-term success

**Early investor opportunity** - Multiple near-term opportunities for discovery driven by strong drilling and exploration pipeline planned over coming months

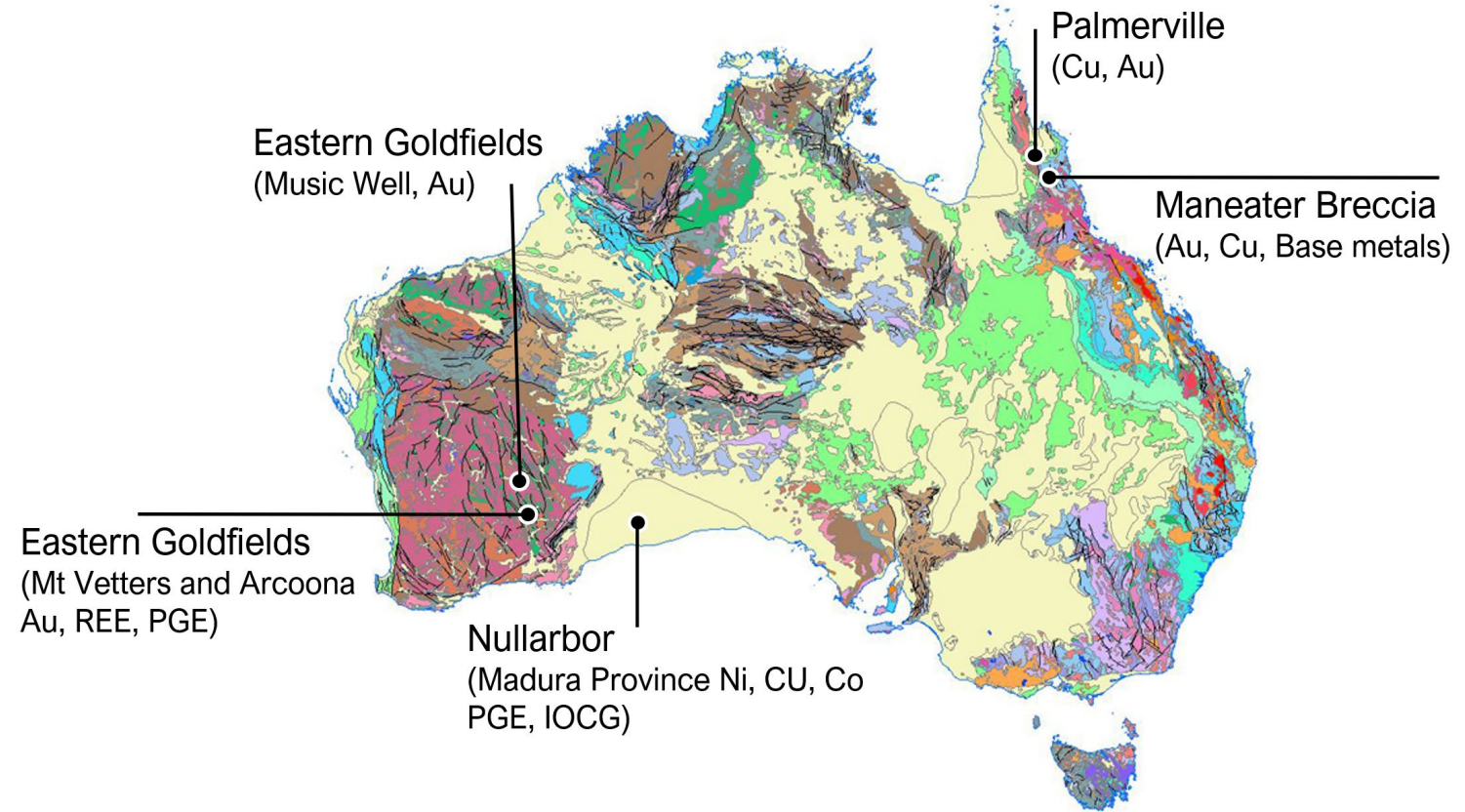
**Results-motivated management team** - Solid capital structure combined with highly experienced and motivated management team

**Focus on quickly advancing priority targets** - Diamond drilling campaign underway in Nullarbor region of WA where NMR discovered IOCG-style alteration in its first drill hole



# World Class Asset Portfolio

Focus on key commodities Copper and Gold in both proven and new deposit-hosting terrains



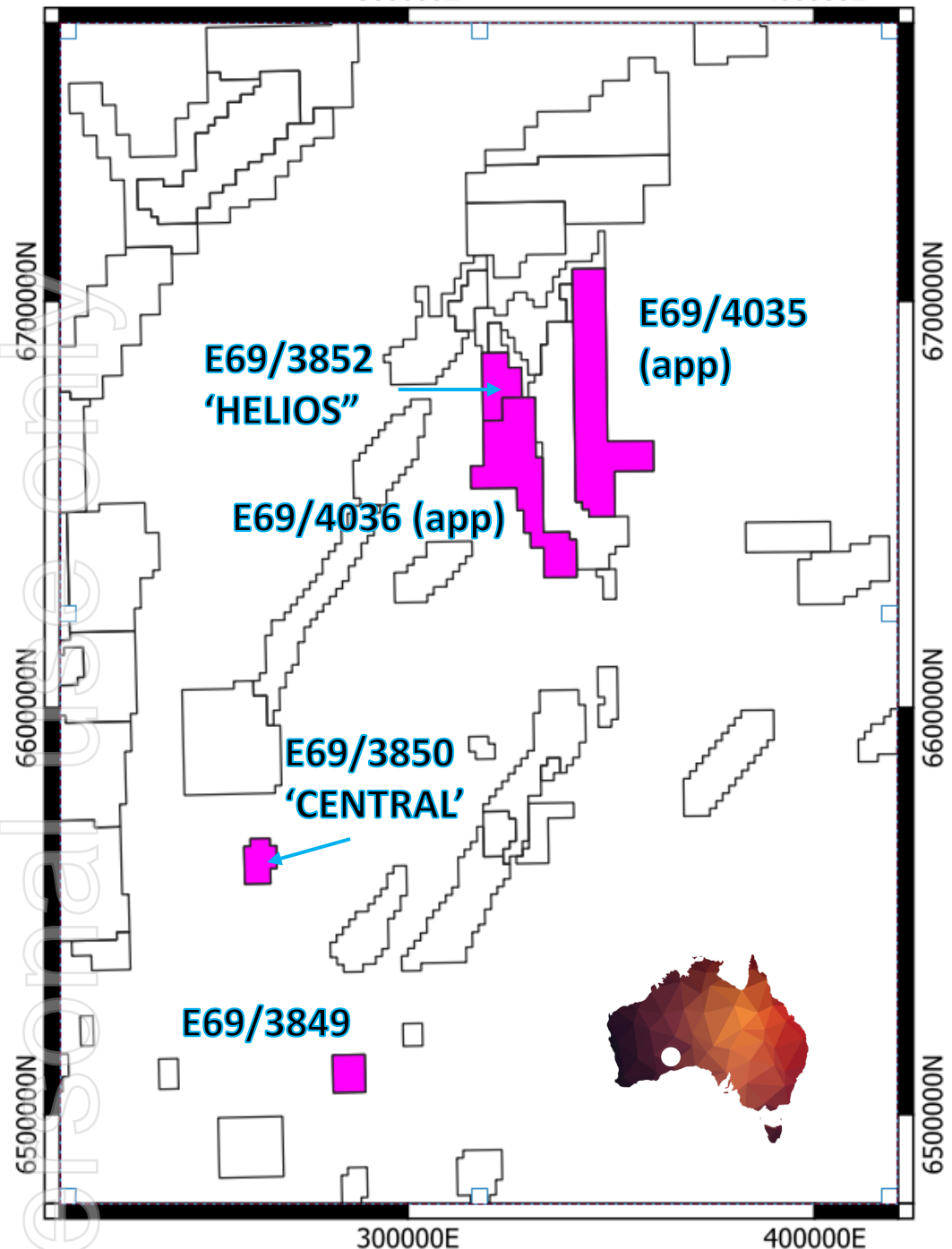
ersonal use only

# **Nullarbor Project Western Australia**

*Actively exploring for IOCG and related-style mineralisation (e.g. Ernest Henry type – Evolution Mining)*

300000E

400000E



# Nullarbor Project Summary

**EARLY EXPLORER ADVANTAGE** - NMR is the leader in this exciting new, and rapidly developing region. NMR have already discovered the first ever IOCG-style alteration.

**PRIME EXPLORATION GROUND** - Three granted tenements and two applications totalling 1303km<sup>2</sup> of prime exploration ground.

**ALREADY GENERATING EXCITING RESULTS** - NMR have completed two drill holes and currently finishing the third hole due for completion at the end of August 2022.

- (1) Helios Phase 1 drilling (DDH\_001) in March 2022,
- (2) Central drilling (DDHC\_003) in Aug 2022 and both have identified significant alteration typically associated with mineralisation and ore deposits.
- (3) Currently drilling Helios Phase 2 (DDH\_002)

# Nullarbor Project Summary



**GOVERNMENT SUPPORT FOR DRILLING AND EXPLORATION - \$220,000** government grant awarded to NMR to drill second hole at Helios on the back of results from Helios\_DD001 containing pervasive IOCG-style alteration.



**MORE POSITIVE RESULTS FROM GRAVITY SURVEY -** A high-resolution ground-based gravity survey was completed in May 2022 which used to pinpoint the target for the second diamond drill hole (DDH\_002).



**NMR ARE LEADERS IN EXPLORATION ON THE NULLARBOR -** Helios Second drill hole (HELIOS\_DD002) an 800m diamond hole is currently ongoing and forecast to complete by end Aug 2022.



**EARLY ACQUISITION OF THE BEST TARGETS -** First explorer advantage in rapidly developing and increasingly competitive frontier terrain

*IOCG-style hematite  
alteration in drill core  
HELIOS\_DD001*

# Nullarbor Project – Current Exploration



## HELIOS Project Area

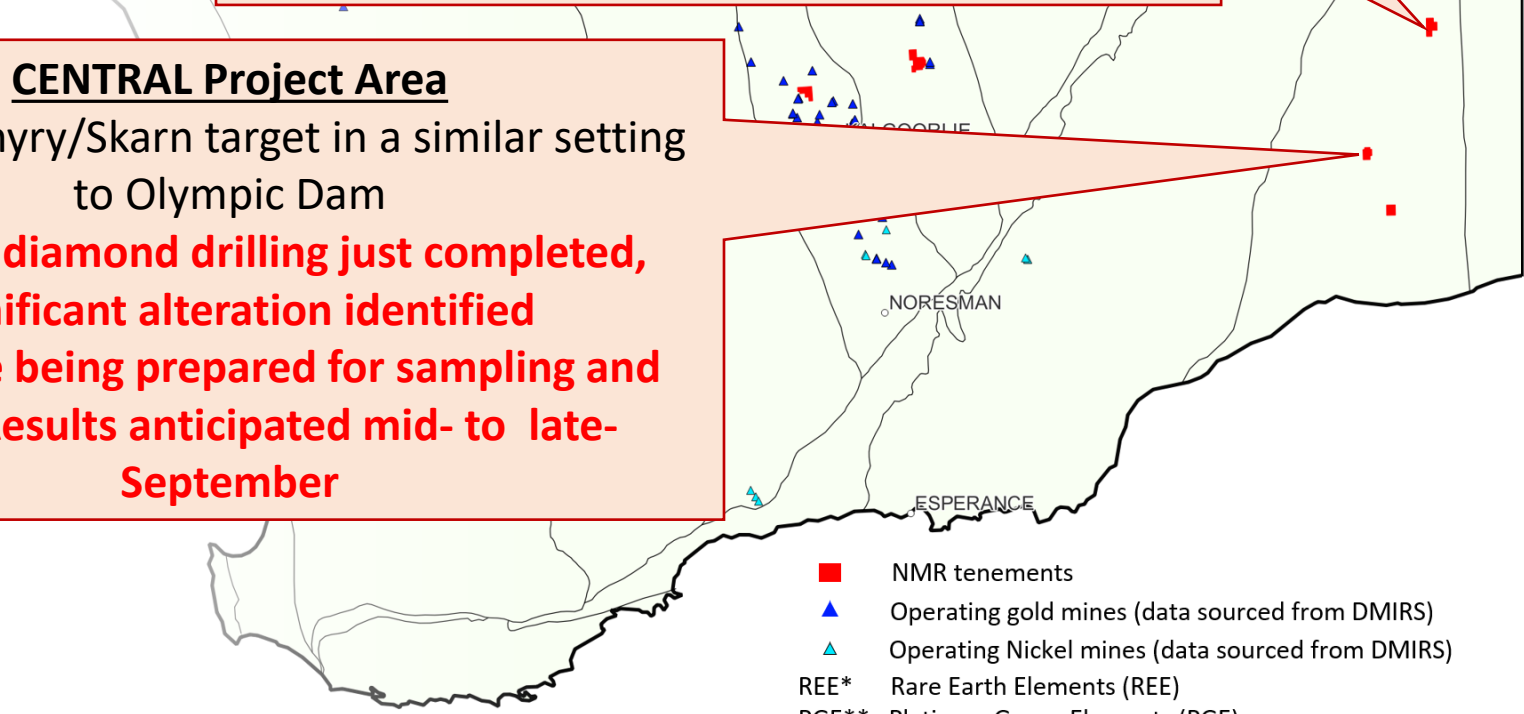
Structurally controlled IOCG-style target

- **IOCG-style alteration already identified.**
- **Phase 1 geophysics and drilling completed.**
- **Phase 2 follow-up 800m Drilling Ongoing (expected completion late August 2022).**
- **Preliminary photos of drill core already published.**

## CENTRAL Project Area

IOCG/Porphyry/Skarn target in a similar setting to Olympic Dam

- **Phase 1 diamond drilling just completed, significant alteration identified**
- **Drill core being prepared for sampling and Assay. Results anticipated mid- to late-September**

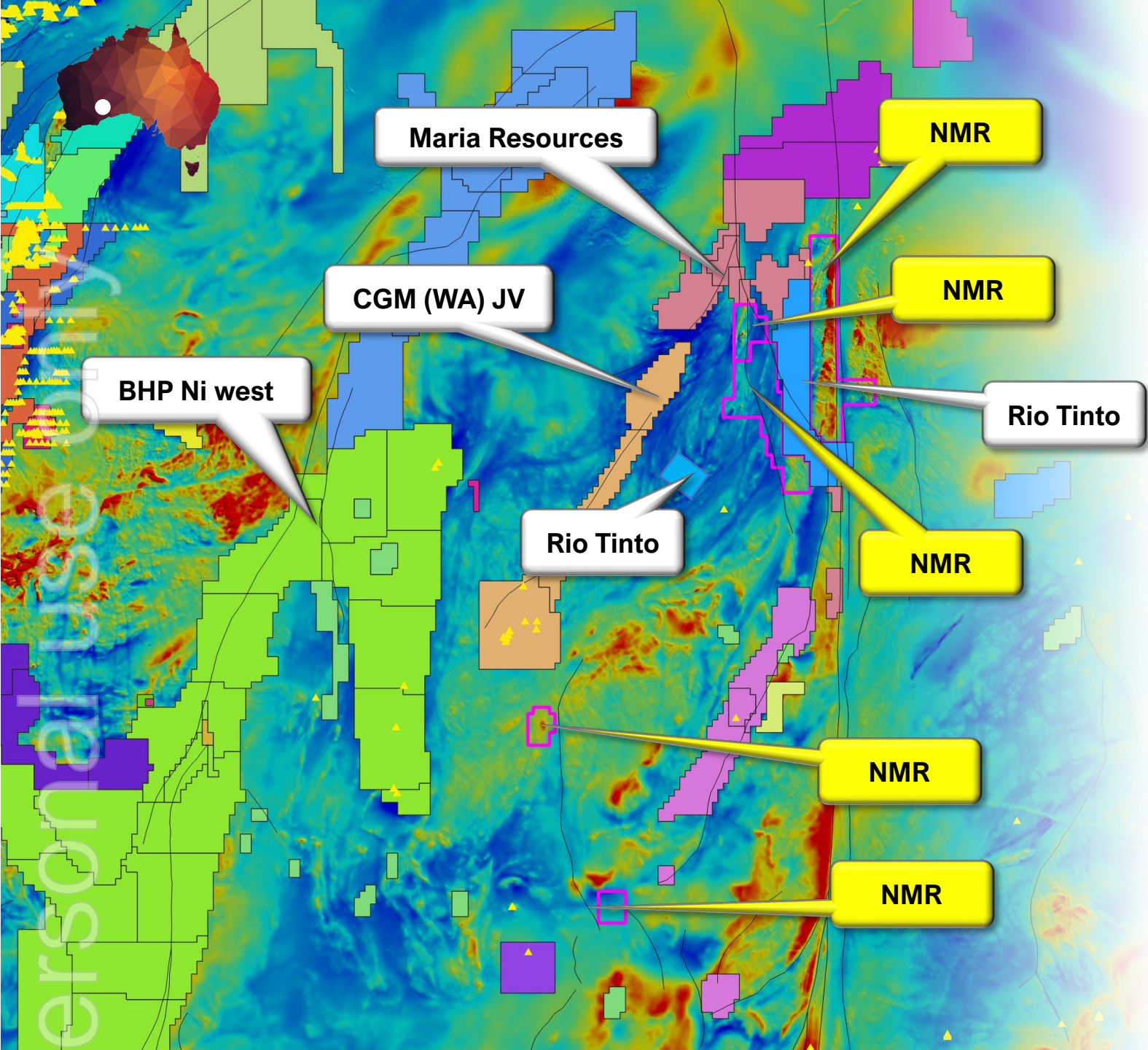


- NMR tenements
- ▲ Operating gold mines (data sourced from DMIRS)
- ▲ Operating Nickel mines (data sourced from DMIRS)
- REE\* Rare Earth Elements (REE)
- PGE\*\* Platinum Group Elements (PGE)

Commercial use only

Hematite (silver) and hematite alteration (red) in drill core  
HELIOS\_DD001





# The Nullarbor is a new and rapidly growing terrain in Australia

The Nullarbor is being recognised as a highly prospective, under explored region in Australia.

New tenement applications are increasing with particular interest from majors such as Rio Tinto Exploration (RTX), BHP Ni West, Maria Resources (Strategic Elements) and CGM.

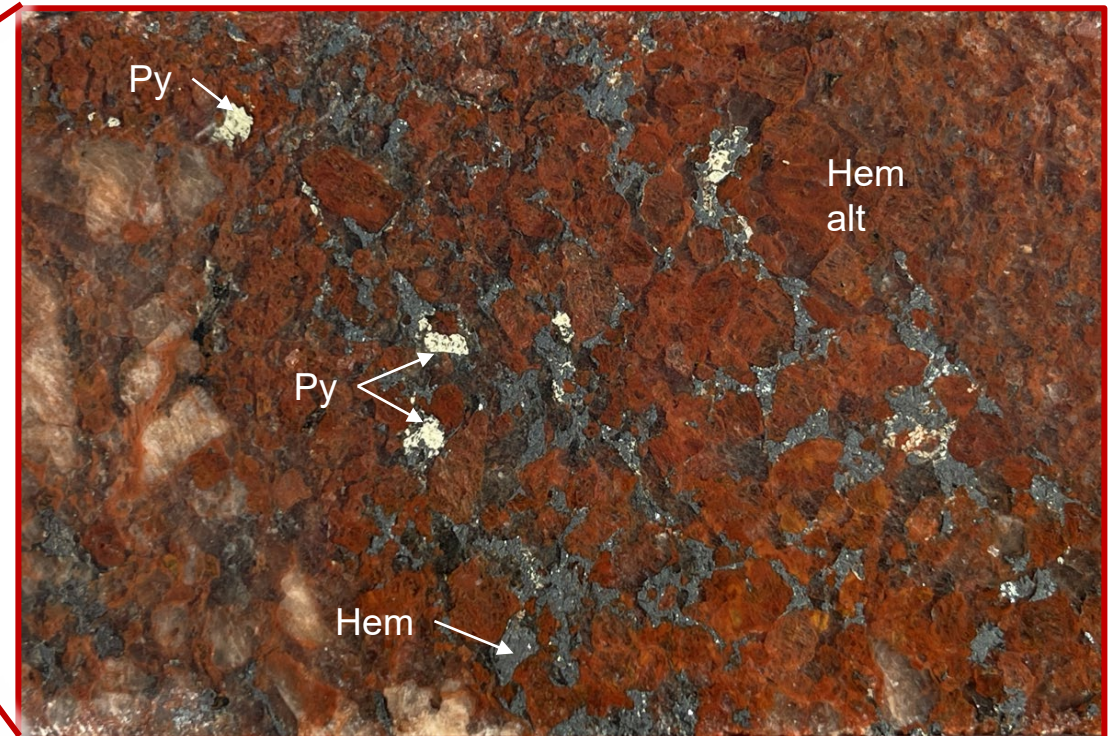
# Nullarbor Project

## HELIOS IOCG – Successful Completion of diamond drill hole



*NMR discovered IOCG-style alteration in its very first drill hole*

Photos below are of the drill core from Helios\_DD001 showing the typical red rocks indicative of IOCG-style hematite + magnetite + pyrite + sericite alteration. The rocks are comparable to the alteration associated with Ernest Henry and Olympic Dam IOCG deposits



# Nullarbor Project

## HELIOS IOCG – DDH001 Similar alteration to Olympic Dam



### OLYMPIC DAM

HEMATITE STAINED  
GRANITE

HRQM

RD2274-372.5 m



Olympic Dam

HELIOS HEMATITE  
STAINED GRANITE  
(sample # 111)



Helios DDH001



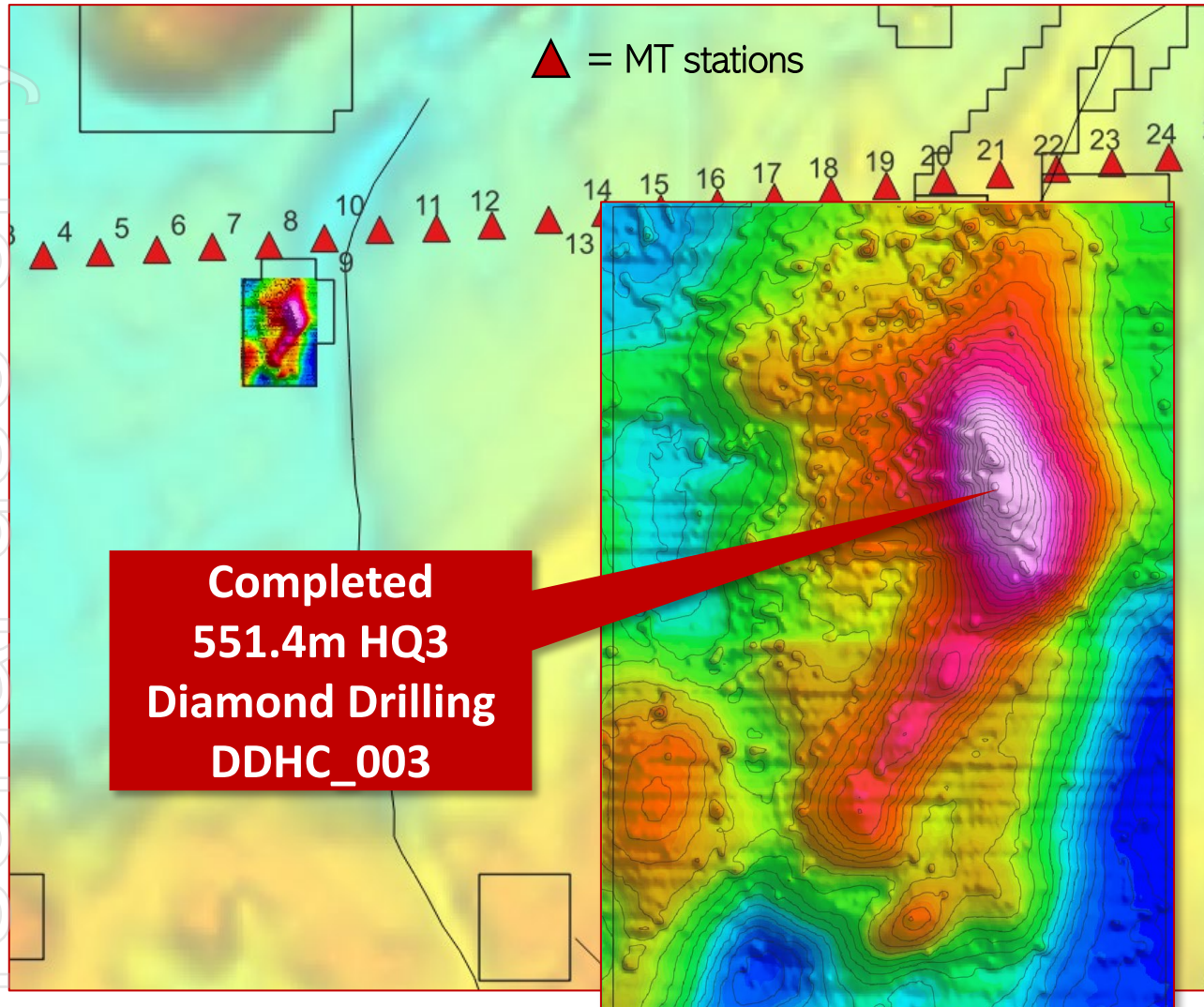
HELIOS HEMATITE  
STAINED GRANITE  
with pyrite + sericite

Helios DDH001

ersonal use only

# Nullarbor Project

## CENTRAL IOCG – Successfully Completed DDHC\_003



**Complex, multiphase “green rock” and “red rock” alteration identified in first ever drill hole**

- Diamond hole DDHC003 targeted a 3.2 km long magnetic high
- Central target ridge is 1200m long and 400m wide
- Magnetic peak is over 760nT (400m depth)
- Primary magnetic target ridge is oblique to the regional NE-magnetic and gravity fabric

# Nullarbor Project

## CENTRAL IOCG – Initial Core Observations (DDHC\_003)



Examples of “green rock” and “red rock” alteration in the Central\_DDHC003 HQ diamond drill hole

# Nullarbor Project

## HELIOS IOCG – Currently drilling second hole DDH\_002

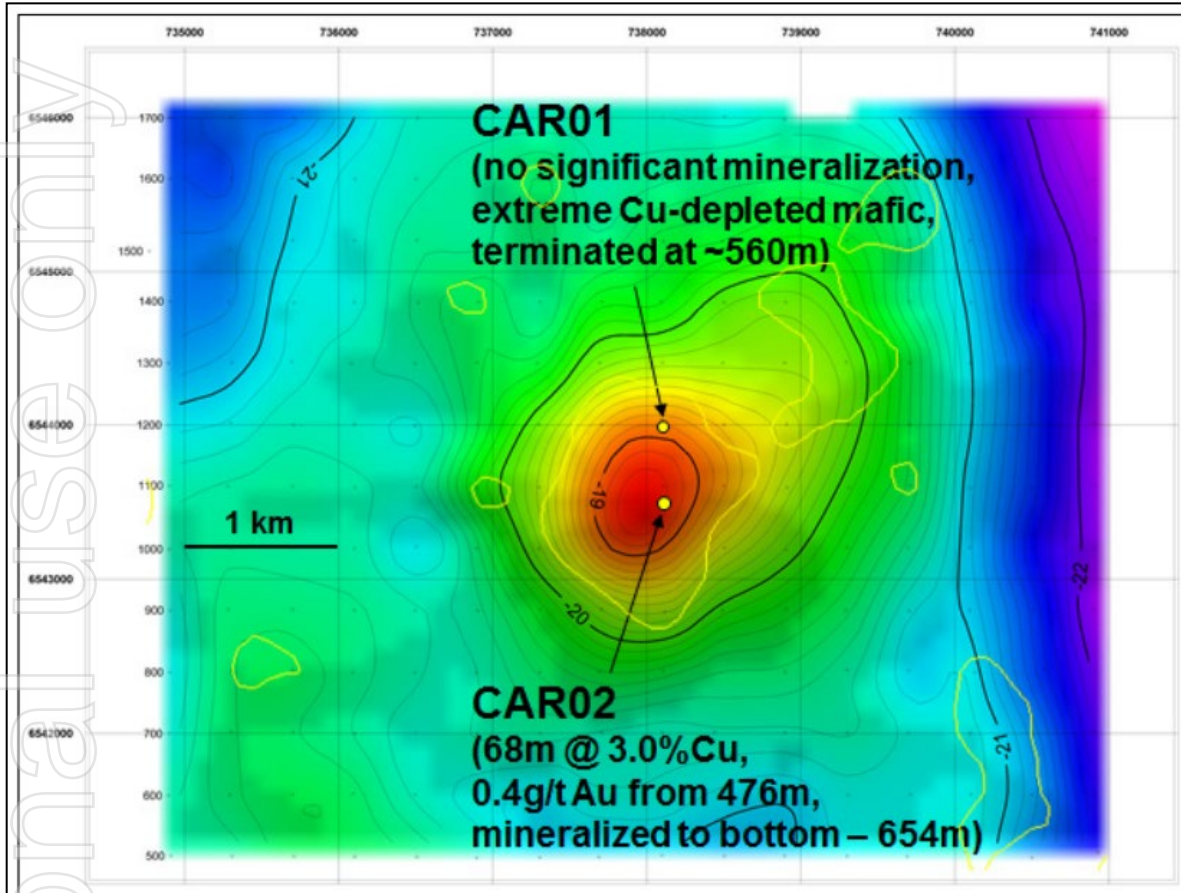
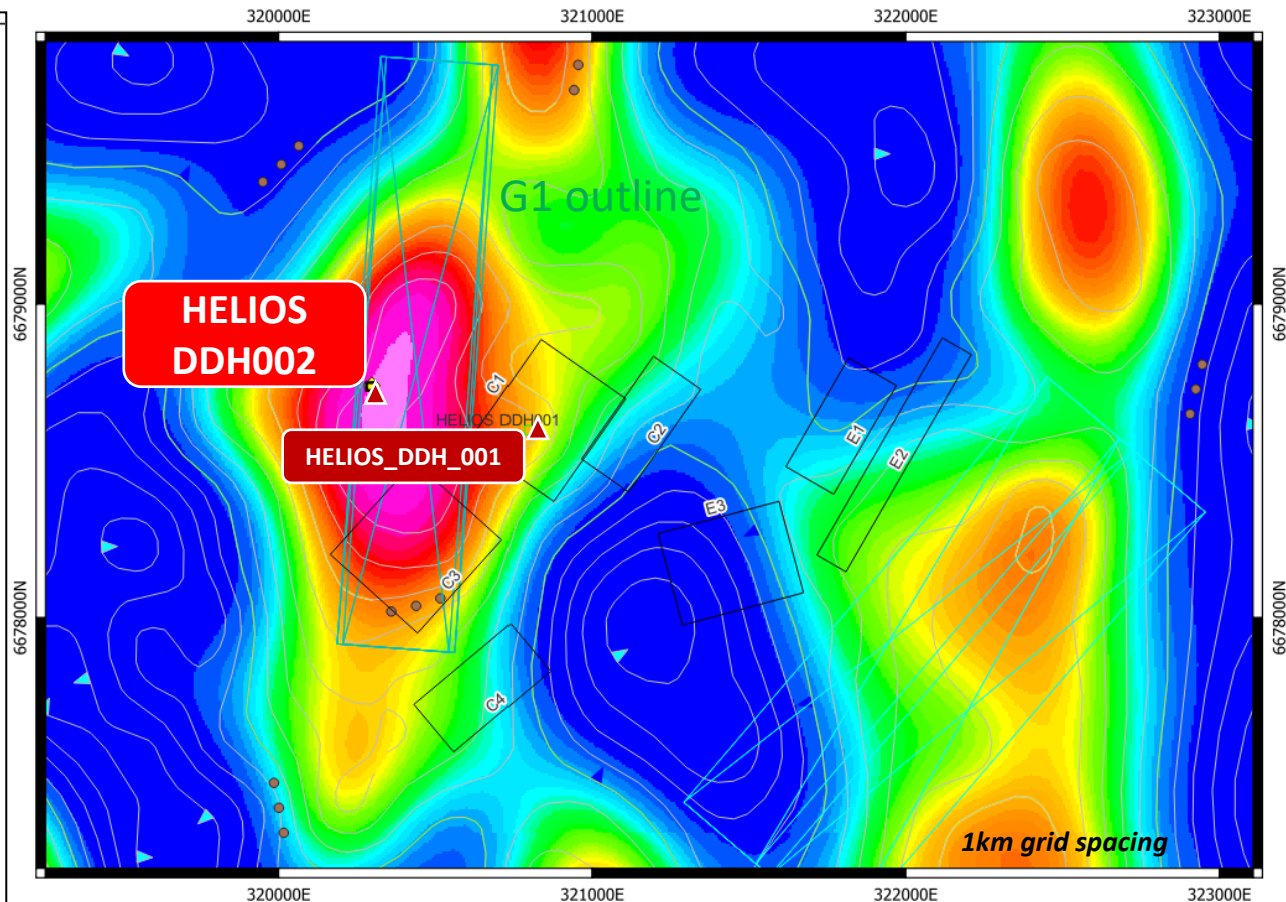


Image of just two drill holes at Carapateena (IOCG) drilled into the gravity anomaly. CAR01 hit no-grade and Cu-depleted rocks, CAR02 intersected mineralisation. Holes are approximately 900m apart.



NMR are currently drilling the core of the gravity anomaly (similar to CAR02). The gravity anomaly is slightly offset from the magnetic anomaly drilled in Helios\_DDH001. Image is gravity inversion RL depth slice at -400m. Grid is UTM Z52. Peak is ~2mgal. Model G1 is 3.3g/cm<sup>3</sup>

# Nullarbor Project - On the road to discovery



ersonal use only



**Successful drill results from the first drill holes completed at both Helios and Central**



**\$220,000 EIS competitive grant awarded from the government to drill a second diamond hole at Helios**



**Impressive Magnetics and gravity survey results have helped focus drill holes to help pinpoint potential mineralisation associated with positive identification of IOCG-style alteration**



**Comprehensive results from Central and Helios drilling to be announced following the acquisition of assays in mid September.**



**Current drilling set to be completed in late August to early September.**

# Maneater Breccia Project North Queensland



60% sulfides identified  
in breccia outcrop by  
previous explorers

NMR planned drilling  
in October 2022

MPD001 – historical,  
>350m shallow angled  
diamond drill hole already  
identified Copper, Gold,  
Silver, Lead and Zinc

Diamond drilling in breccia  
revealed sulfides in almost  
every meter of drill hole  
through the breccia.  
\*Up to 100% sulfides in  
some sections!

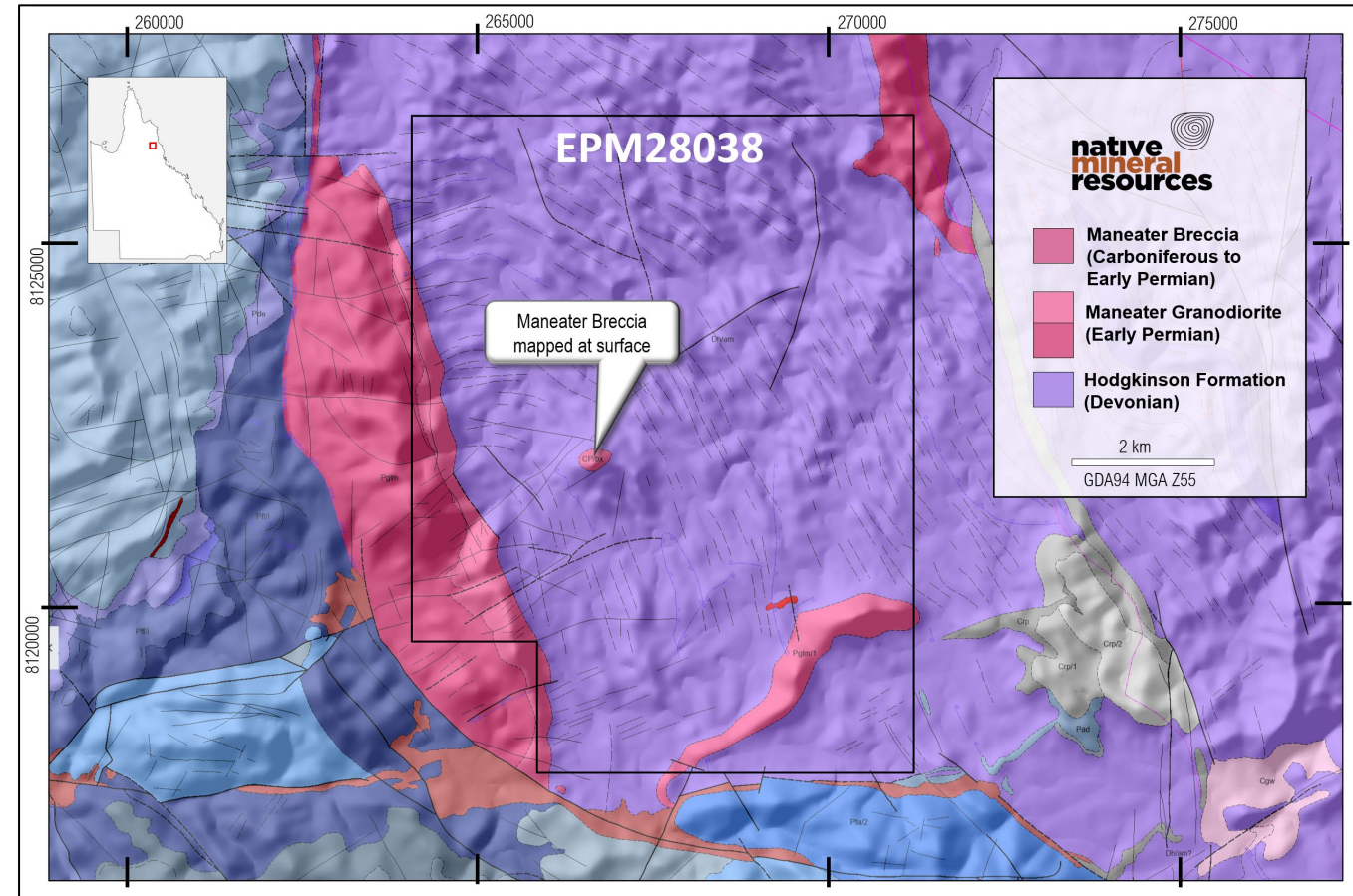


# Maneater Breccia Project QLD

## Highly prospective Gold-Copper Breccia Pipe



- Precise **target and model already defined** therefore no “research and targeting” period
- High geological potential + existing mineralisation = **rapid results**
- **Close to infrastructure**, access already exists to drill site
- **Highly sought-after area** – e.g., NMR’s maneater tenement is now bound by FMG to the west, north and east after FMG applied for new tenements
- North Queensland is a **proven geological setting for Gold-bearing breccia pipes** including Mt Wright (>1 Moz Au); Mt Leyshon (>3.5 Moz Au); Kidston (>5 Moz Au)



**Multiple targets on NMR’s tenement EPM28038**

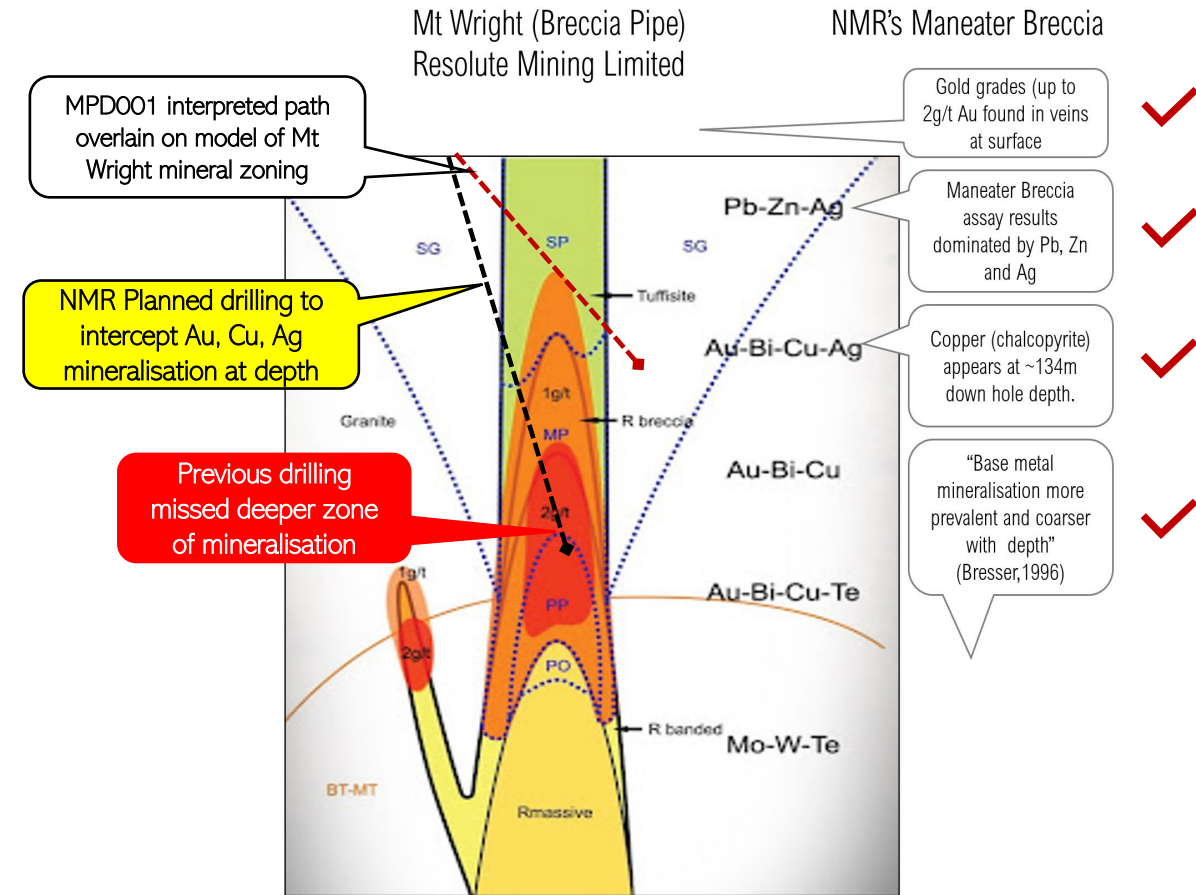
# Maneater Breccia Project QLD

## Drilling to commence soon to unlock opportunity below existing drill hole.



### Positive results already obtained from previous diamond drilling:

- “Increasing metal abundance with depth”.
- >300m of sulfides in breccia (from 48m to 356m down hole depth).
- 80-100% sulfides reported at ~240m down hole.
- Increasing copper (chalcopyrite) with increasing depth.
- Historical diamond drillhole (MPD001) assays show an impressive intersection of **94m @ 4.45g/t of Silver (Ag)** apparent intersection at 53 degrees true thickness of 71.9m.
- Ag intercepts commence at 50m below surface and reach up to **15.8g/t Ag** at 200m down hole depth.
- High Pb & Zn at shallow levels.
- Low gold grade at shallow levels (a good indicator).
- Intrusive porphyry noted in drill logs.
- Clay and sericite alteration = upper level.



Schematic cross section and mineral zoning from Resolute Mining's Mt Wright Breccia Gold mine.

# Palmerville Project North Queensland



# Palmerville Project

**Premiere Copper- and Gold-bearing area with over 50 targets already identified**

- 9 x tenements in region with over 50 high priority copper and gold targets ready for follow-up field work in late 2022.
- Extremely competitive and highly prospective ground. NMR have an almost continuous tenement package which is rare in this current exploration boom. NMR have been granted Project Status by the GSQ.
- Tenements cover approximately 130km of the under explored 'Chillagoe Formation', a rock unit that is a proven host to mineral deposits to the south, e.g.
  - Mungana Porphyry**, Base metal 1.956 Mt @ 14.3% Zn, 2.8% Cu, 2.2% Pb, 188g/t Ag and 1.15g/t Au (inferred 2 Moz Au)
  - Red Dome** pre-mining reserve of 15 Mt @ 2.6 g/t Au

# Palmerville Project - Key Prospects

## Leane's Copper

- Surface samples of up to **31.1% Cu**
- Shallow drill intercepts of **33m @0.49 including 2m @1.1% Cu (LRC04)**
- 9 Drill holes
- Interpreted top of deeper porphyry system, with geophysics planned before deep drilling completed

## Fairlight

- The Fairlight mine is an ~30m deep shaft at the contact between red jaspers and altered mafic intrusives.
- Samples returning positive results of up to **7.99% Cu with 9ppm Ag.**

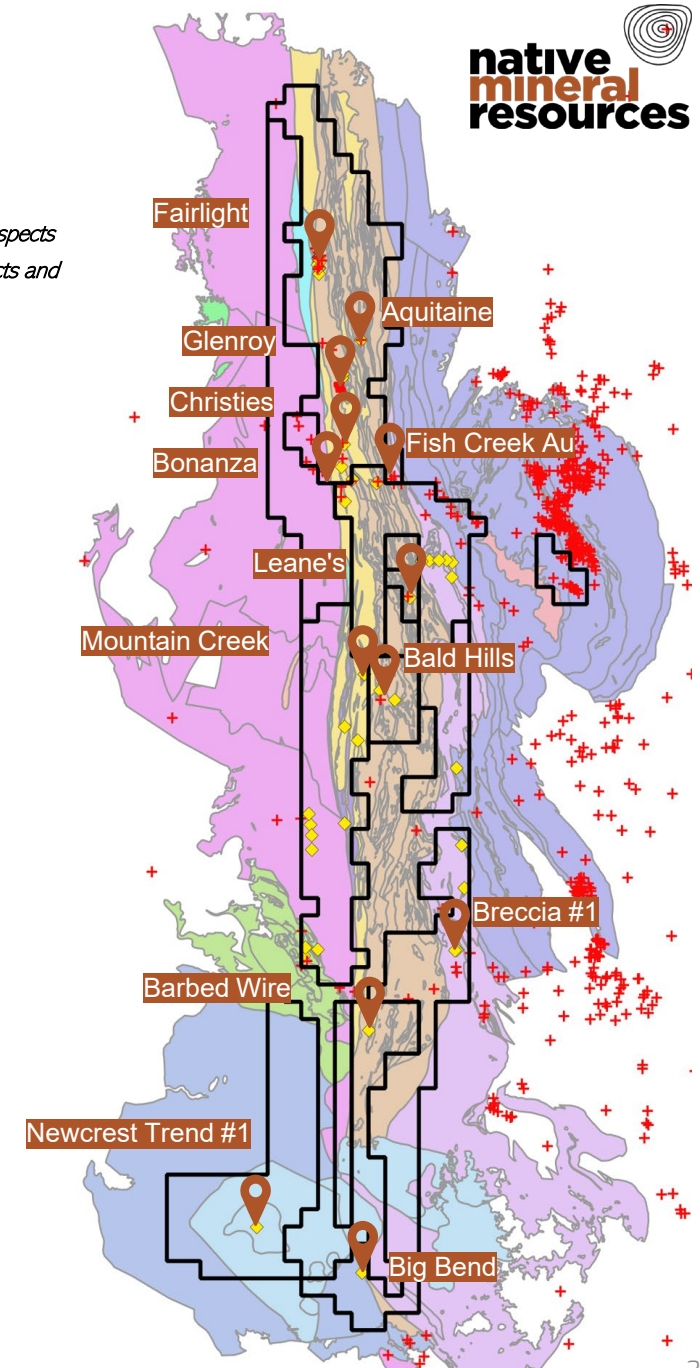
## Glenroy

- Glenroy also associated with historical mine shafts
- Samples from NMRs recent field campaign returned grades of **5.26% Cu**

## Bald Hills

- Historical copper workings.
- Anomalous gold and copper values from soil and rock chip sampling, **0.26ppm Au and 0.575% Cu.**

- ◆ = NMR priority prospects
- + = Regional prospects and occurrences



# **Palmerville and Maneater Project – Abundant Copper and Gold target set for growth**



**Extremely sought-after package of 9 tenements covering the proven, Cu and Au deposit-bearing Chillagoe Formation.**



**Over 50 high priority Copper and Gold targets ready for follow up field work.**



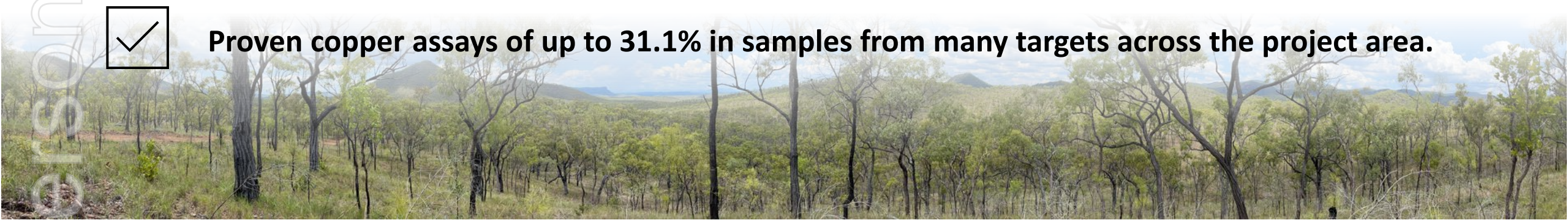
**Drilling set to commence at the Maneater Hill Breccia Pipe in October 2022 where results already revealed significant Pb, Zn, Ag and abundant sulfide mineralisation.**



**All tenements are now surrounded by companies including Fortescue Metals Group (FMG) highlighting the prospectivity and highly competitive nature of this part of Queensland.**



**Proven copper assays of up to 31.1% in samples from many targets across the project area.**



# Eastern Goldfields Western Australia

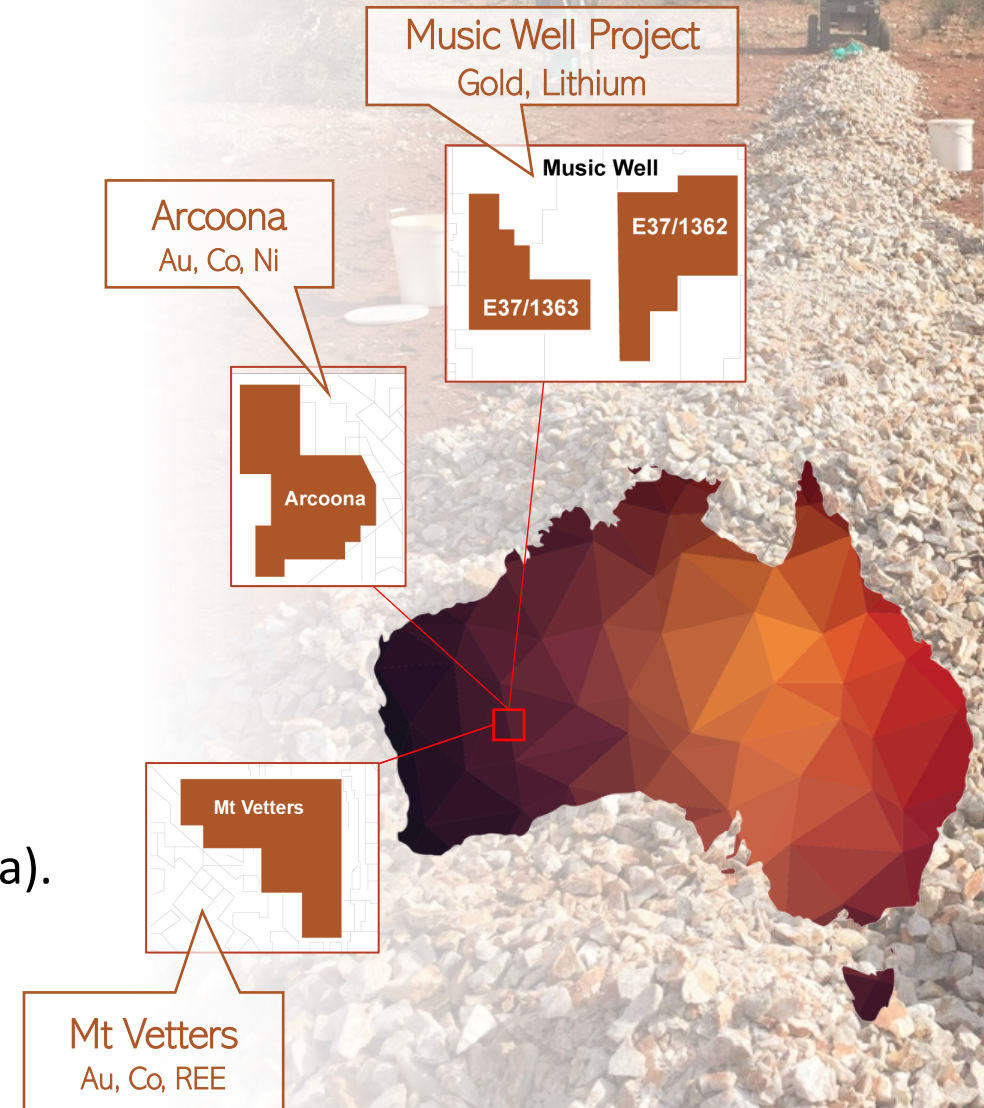
*Four highly prospective  
tenements located in the heart  
of gold country*

ersonal use only

# Eastern Goldfields Project

**Multiple opportunities in some of the world's most competitive and sought-after gold ground**

- 4 Greenfields exploration tenements:
  - ✓ Music Well (2 tenements), Arcoona & Mt Vettors.
  - ✓ Samples over **129g/t Au (bonanza grades)** already recovered from Rock Chips at surface (Music Well).
  - ✓ **Visible gold** in multiple surface rock chip samples
- Exploring granite hosted Au adjacent to proven “gold-in-granite” mines (e.g. the Welcome Mine).
- Surrounded by significant projects including:
  - Northern Star** >660,000 oz Au combined resource and >400,000 oz Au past production (Bundarra project area).
  - Mandilla Project** (19.8mt @ 1g/t Au) Anglo Australia Resources (\$65m market cap)
  - Bundarra Project** Northern Star (2017 sold for \$8.5M)



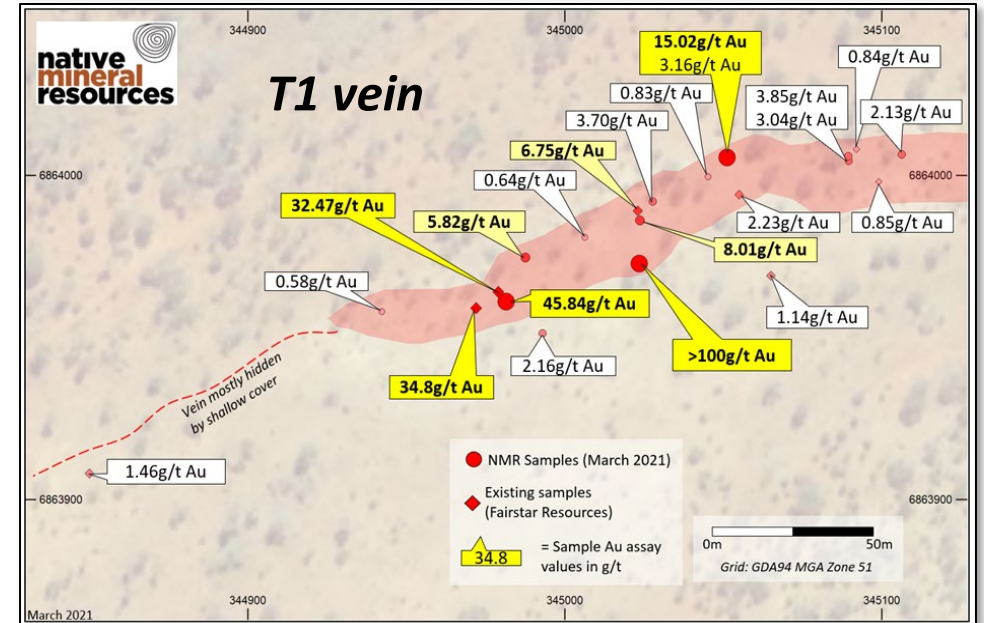
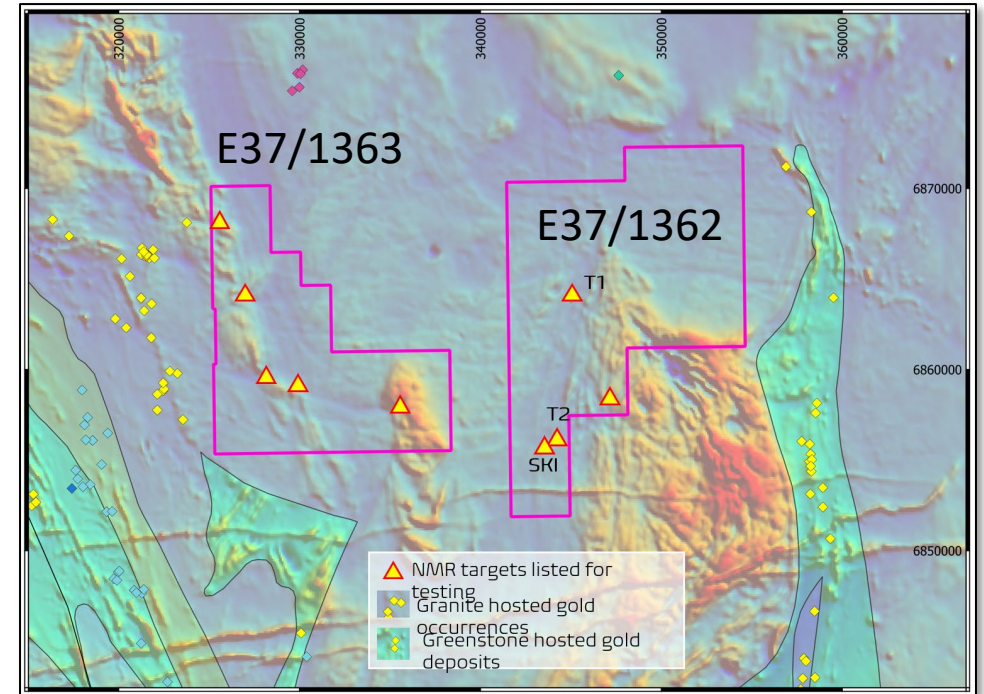




# Eastern Goldfields Project

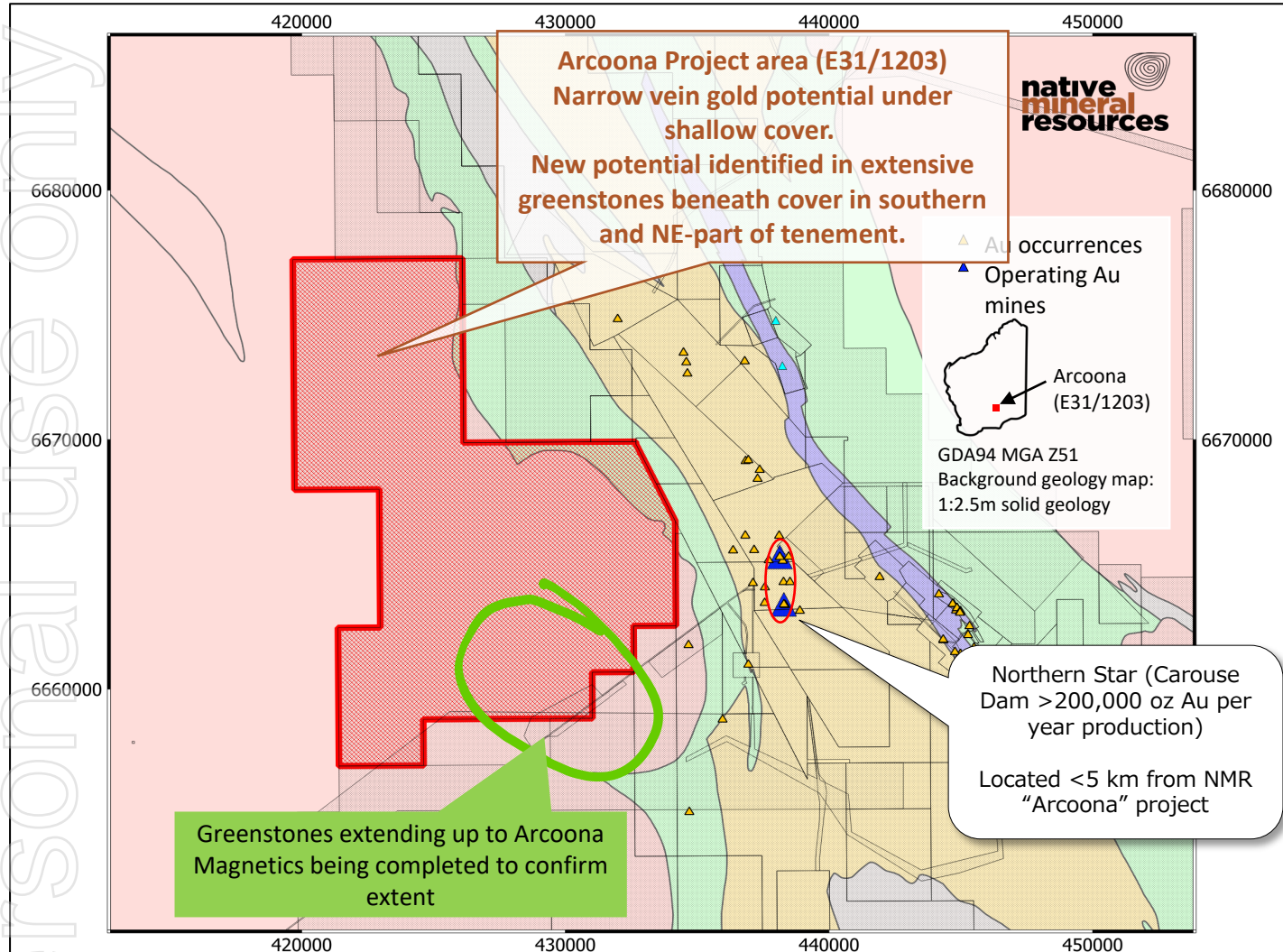
## Music Well: Gold & Lithium

- Gold-bearing veins already discovered + gold anomalies across the project identified for immediate follow up.
- NMR just completed a high-resolution airborne (fixed wing) magnetics survey over E37/1363 with outstanding results.
- Further field-based sampling on both tenements set to follow up existing results.
- Targets generated during magnetics survey will be prioritised for field work (vegetation sampling)
- Gold targets on E37/1363 lie along the eastern extensions of the same structures that host gold mines. Extremely prospective for significant high grade, narrow vein gold.



# Eastern Goldfields Project WA

## Arcoona: Gold, Cobalt, Nickel Targets



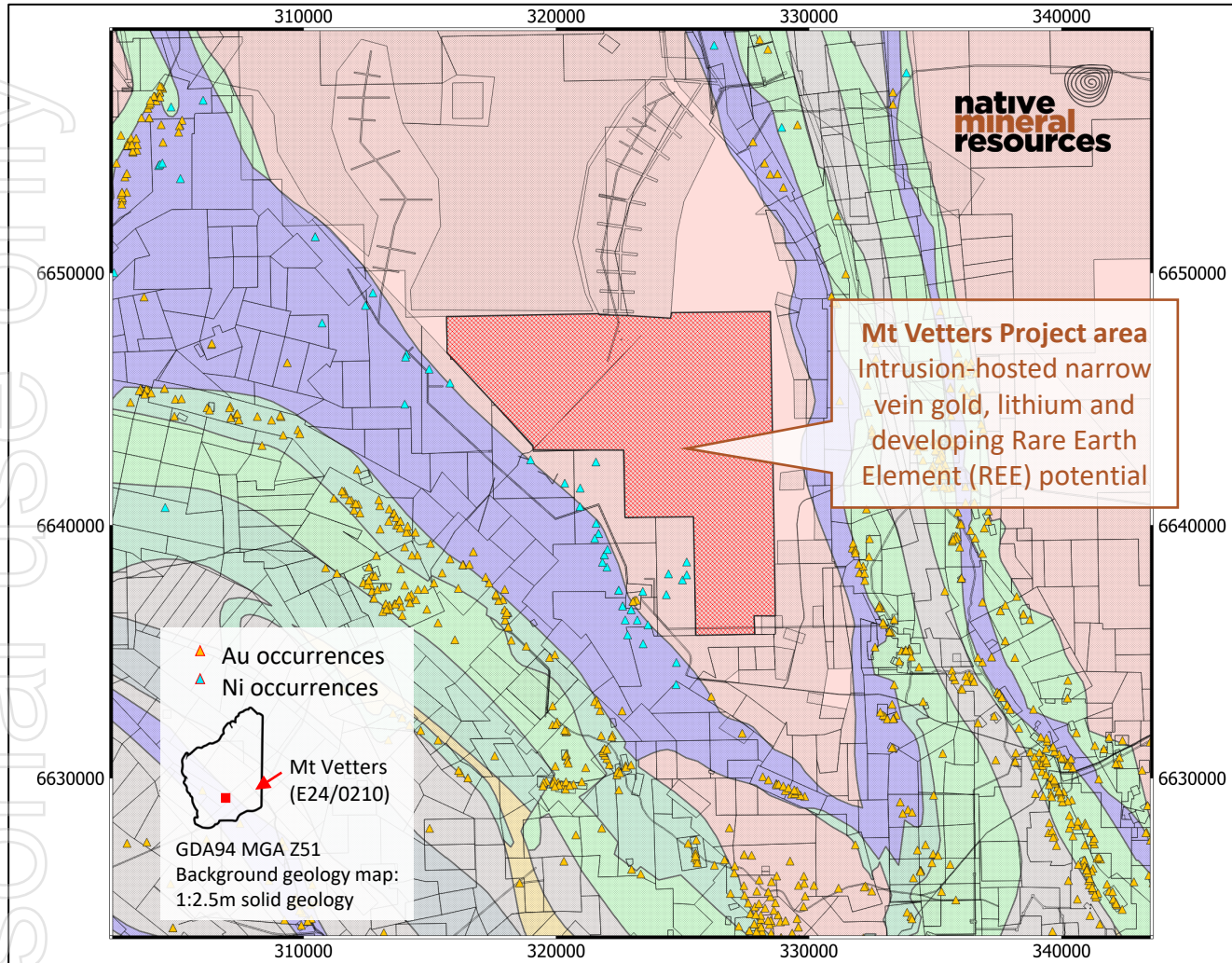
- **NEW OPPORTUNITIES ARISING FROM NEW DATA** - Greenstones (main gold bearing rocks of the Yilgarn) extending into tenement!
- **PROVEN Au ANOMALIES (soil) IN UNDER EXPLORED TERRAIN –**
- **ADJACENT TO MAJOR GOLD DEPOSITS -** Surrounded by tenements held by large mining companies including Northern Stars Carouse Dam gold mine (ex Saracen) located only 5km to the east.

### Outlook for 2022-2023

- Soil sampling over key areas completed – Awaiting assays
- High resolution airborne magnetics survey completed
- Further drilling and sample assays will be used to zoom-in on potential zone of mineralisation - NMR have already identified many targets on Arcoona that have previously been overlooked.

# Eastern Goldfields Project WA

## Mt Vettors: Gold, Nickel and REE



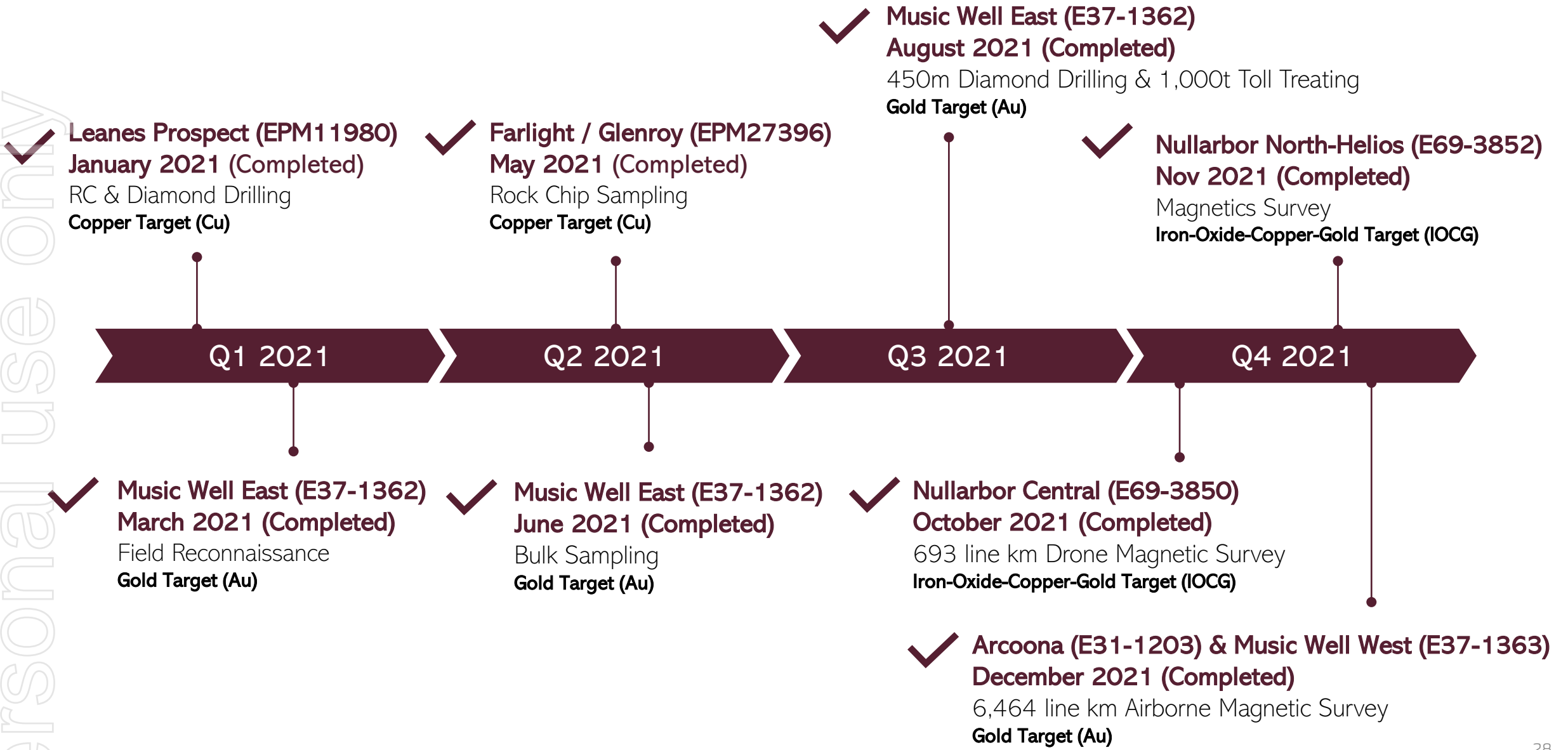
- **Mt Vettors** lies adjacent to multiple Ni mines and in an area prospective for granite hosted **Gold**
- Also prospective for **Rare Earth Elements (REE)**
- Field campaign to start in early 2023 to identify Au and REE prospectivity.
- The tenement is close to Kalgoorlie, the heart of mining country in the Yilgarn.

### Outlook for 2022-2023

- Soil sampling and cutting-edge geochemical analysis to help identify anomalous Ni and/or REE under shallow cover.
- Follow-up drilling to basement to estimate thickness and extent of potential mineralisation.
- After pinpointing any high-grade anomalous REE or Ni geochemistry, NMR will undertake a more comprehensive drilling campaign to help define a potential resource close to Kalgoorlie.

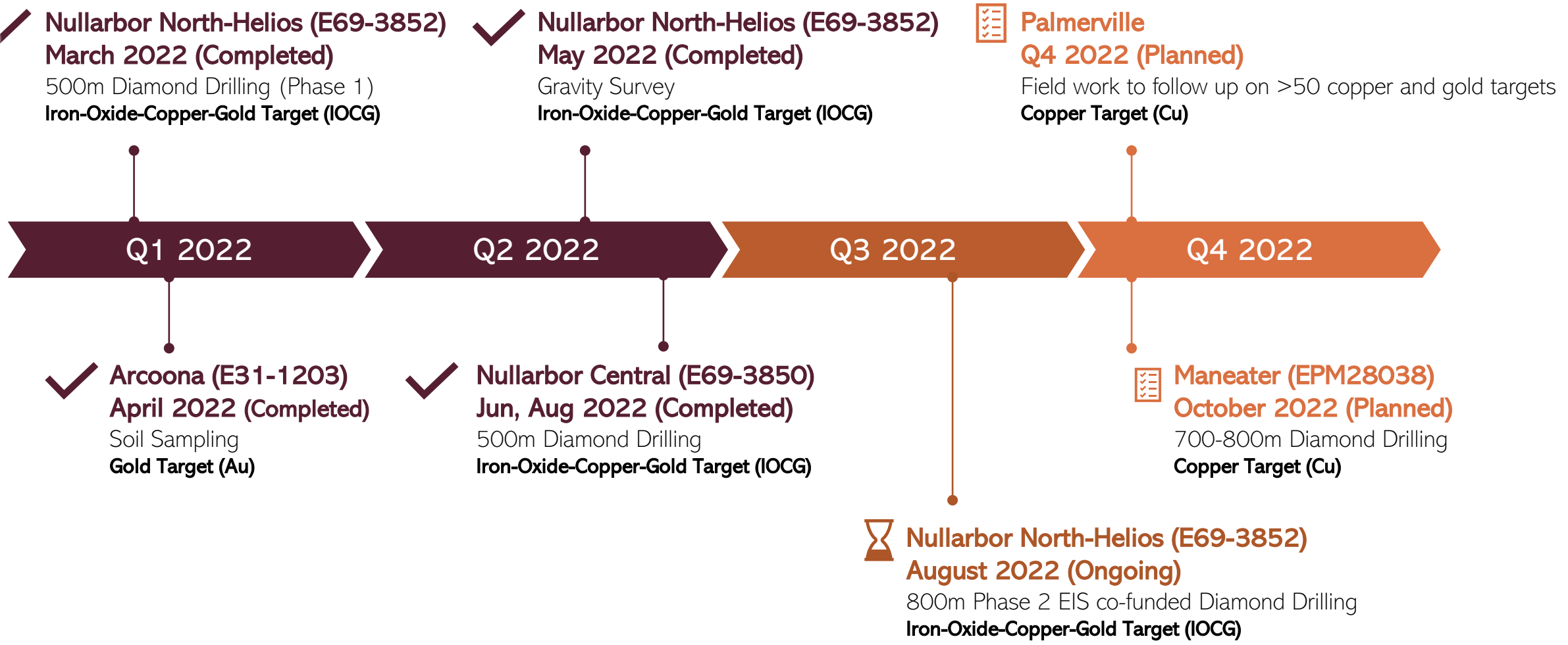
# Works Completed

ersonal use only



# 2022 Work Program Summary

ersonal use only



# Disclaimer

In preparing this information Native Mineral Resources did not take into account the investment objectives, financial situation and particular needs of the individual investors. Before making an investment decision on the basis of this information, the investor needs to consider, with or without the assistance of a financial advisor, whether the investment is appropriate in light of their particular investment needs, objectives and financial circumstances.

## Forward Looking Statements

Native Mineral Resources has prepared this presentation based on information available to it. No representation or warranty, express or implied, is made as to the fairness, accuracy, completeness or correctness of the information, opinions and conclusions contained in this announcement. To the maximum extent permitted by law, none of Native Mineral Resources, its directors, employees or agents, advisers, nor any other person accepts any liability, including, without limitation, any liability arising from fault or negligence on the part of any of them or any other person, for any loss arising from the use of this announcement or its contents or otherwise arising in connection with it. The information contained within this document is not an offer, invitation, solicitation or other recommendation with respect to the subscription for, purchase or sale of any security, and neither this announcement nor anything in it shall form the basis of any contract or commitment whatsoever. This announcement may contain speculative and forward-looking statements that are subject to risk factors associated with the exploration for gold, copper, nickel and other minerals and metals, mining and production businesses. It is believed that the expectations reflected in these statements are reasonable but they may be affected by a variety of variables and changes in underlying assumptions which could cause actual results or trends to differ materially, including but not limited to price fluctuations, actual demand, currency fluctuations, drilling and production results, Resource or Reserve estimations, loss of market, industry competition, environmental risks, physical risks, legislative, fiscal and regulatory changes, economic and financial market conditions in various countries and regions, political risks, project delay or advancement, approvals and cost estimates. The information in this document relates to, and contains extracts and modified figures from, previous ASX public announcements made by Native Mineral Resources. Native Mineral Resources confirms that it is not aware of any new information or data that materially affects the information included in the in the following presentation and that all material assumptions and technical parameters underpinning the information provided continue to apply and have not materially changed. No reference to Resource or Reserves are presented and all projects are exploration phase only.


Authorised to release to the ASX by Mr. Blake Cannavo, CEO.

## Competent Person Statement

The information that relates to Exploration Targets and Exploration Results is based on, and fairly represents, information compiled by Dr Simon Richards, a Competent Person, who is a Member of the AIG and AusIMM. Dr Richards is the Chief Geologist of NMR. Dr Richards has sufficient experience in both mining and exploration, which is relevant to the style of mineralisation and type of deposit under consideration, and to the activity he is undertaking, to qualify as a Competent Person as defined in the 2012 Edition of the 'Australasian Code for Reporting of Exploration Results, Mineral Resources and Ore Reserves'. Dr Richards consents to the inclusion of the matters based on his information in the form and context in which it appears.

ersonal use only



 +61 2 6583 7833

 [info@nmresources.com.au](mailto:info@nmresources.com.au)

 [www.nmresources.com.au](http://www.nmresources.com.au)

## CONTACT

**Blake Cannavo**

Managing Director & CEO

Tel: +61 457 777 880

Email: [blake@nmresources.com.au](mailto:blake@nmresources.com.au)

## NEW SOUTH WALES

Suite 10, 6-14 Clarence St,  
Port Macquarie, NSW 2444

## QUEENSLAND

Suite 59, Level 54, 111 Eagle  
St, Brisbane, Qld 4000

# Appendice 1: Tenement Schedule

Location	Tenement ID	Tenement Name	Sub-Block (Sqkm)	Key Commodity	Status
Nullarbor, WA	E69/3852	Northern Nullarbor (Helios)	41 (114.8)	Au, Cu (IOCG)	Granted, 100% NMR Owned
Nullarbor, WA	E69/3850	Central Nullarbor	26 (72.8)	Au, Cu (IOCG)	
Nullarbor, WA	E69/3849	South Nullarbor	25 (70)	Au, Cu (IOCG)	
Maneater Hill, QLD	28038	Maneater Hill	19 (62.51)	Cu, Au, Ag, Pb	
Palmerville, QLD	11980	Limestone Creek	4 (13.2)	Cu, Au	
Palmerville, QLD	18325	Bald Hills	15 (49.4)	Cu, Au	
Palmerville, QLD	19537	Mitchell River South	33 (108.6)	Cu, Au	
Palmerville, QLD	26891	Palmerville North	63 (207.27)	Cu, Au	
Palmerville, QLD	26893	Palmerville West	100 (329)	Cu, Au	
Palmerville, QLD	26894	Palmerville East	84 (276.36)	Cu, Au	
Palmerville, QLD	26895	Palmerville South	63 (292.81)	Cu, Au	
Palmerville, QLD	27396	East Palmerville North	100 (329)	Cu, Au	
Palmerville, QLD	27452	East Palmerville South	65 (213.85)	Cu, Au	
Eastern Goldfields, WA	E37/1362	Music Well	58 (162)	Au, Li	
Eastern Goldfields, WA	E37/1363	Music Well	39 (109)	Au, Li	
Eastern Goldfields, WA	E31/1203	Arcoona	61 (171)	Ni, Au, Li, REE	
Eastern Goldfields, WA	E24/210	Mt Veters	35 (98)	Ni, Au, Li, REE	
Nullarbor, WA	E69/4035	Mundra East	196 (TBA)	Au, Cu (IOCG)	Pending Grant In Application Mar 22
Nullarbor, WA	E69/4036	Mundra West	151 (TBA)	Au, Cu (IOCG)	
TOTAL			2,679.60 km <sup>2</sup>		