

Native **Mineral** Resources Holdings Limited (ASX:NMR)

ACN 643 293 716

2022 Annual General Meeting

Addresses to Shareholders

Wednesday 30th November 2022



ersonal use only

Chair's Address

- Key Successes for 2021-2022



Mr. James Walker
Non-Executive Chair

Key Successes for 2021-2022

Music Well

- ✓ Vein returns "Bonanza Grades" of gold, including 147g/t Au and 129g/t Au. 30kg bulk samples had 15g/t Au. Multiple rock chip samples contain gold.
- ✓ EIS drilling proved the vein extends 50m-depth.
- ✓ High-res mag survey identifies major structures from adjacent gold-mines on the tenement.

Arcoona

- ✓ High-resolution mag survey discovered a possible gold-bearing greenstones.
- ✓ The NE and SE corners of the tenement were sampled for Au, Cr, Co, and Ni above potential greenstones and mafic rocks identified by airborne magnetics. Result in QAQC.

Nullarbor

- ✓ First ever discovery of hematite-dominated IOCG-style alteration, hydrothermal "footprint" linked to IOCG-type mineralization at Helios (North Nullarbor)
- ✓ First ever drill hole identified complex, multiphase "green rock" and "red rock" alteration at Central Nullarbor

Palmerville Project

- ✓ Ongoing development of the Palmerville project with new targets prioritised where historical rock chip samples of 13.8% and 11.3% copper have been reported.

Maneater Hill

- ✓ Acquisition of a new tenement "Maneater" in Northern Queensland.
- ✓ Drilling intersects shallow visible massive and semi-massive sulfides at the Maneater Breccia.



ersonal use only



Mr. Blake Cannavo
Managing Director & CEO

CEO's Address

- FY2022 Financial Metrics
- FY22 & 1H-FY23 Key Highlights
- NMR Directors and Management Team
- NMR Tenement Holdings
- FY2023 Exploration Overview

FY2022 Financial Metrics

Total Equity (A\$)

498,044

vs (2,002,439) FY21

Cash (A\$)

449,962

vs 2,049,092 FY21

Operating Net Cash Flow (A\$)

(4,547,605)

vs (3,197,505) FY21

Ordinary Shares (A\$)

9,268,187

vs 6,313,727 FY21

Ordinary Shares (Number)

99,128,441

vs 85,288,501 FY21

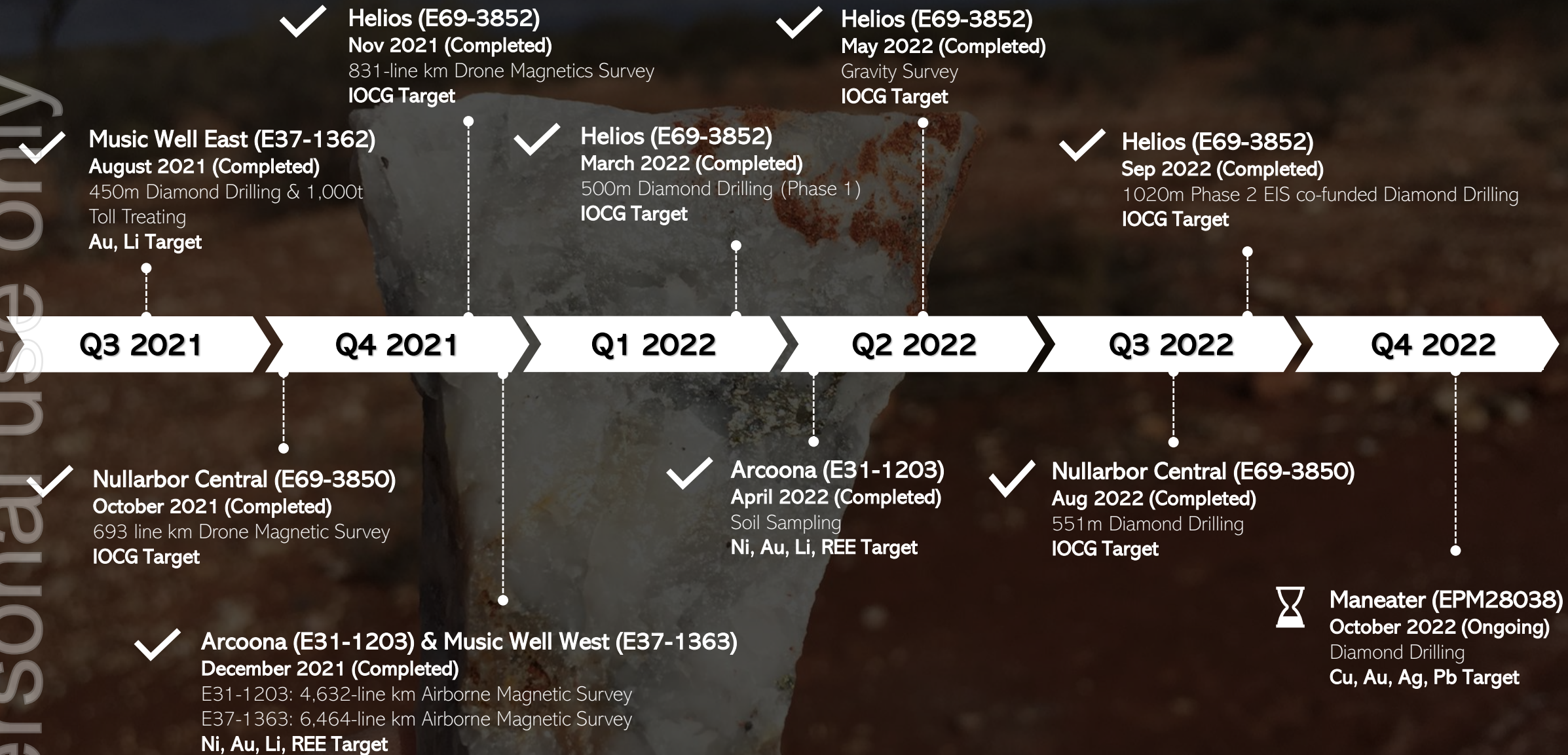
Dividend (A\$ cents/share)

No Dividend
Paid During FY22

- Rights issue and shortfall placement completed on 9 December 2021, raising a total of **\$3,000,756** (before costs) with 13,764,940 ordinary shares at \$0.218 per share.
- Subsequent to FY22 - A rights issue offer of up to 16,521,407 shares at \$0.13 per share was made on July 18, 2022. All rights issue shares had been issued as of October 31, 2022, raising a total of **\$2,147,783** (before costs).

FY22 & 1H-FY23 Key Highlights

ersonal use only



NMR Tenement Holdings

Location	Tenement ID	Tenement Name	Sub-Block (Sqkm)	Key Commodity	Status
Nullarbor, WA	E69/3852	North Nullarbor	41 (114.8)	Au, Cu (IOCG)	Granted
Nullarbor, WA	E69/3850	Central Nullarbor	26 (72.8)	Au, Cu (IOCG)	Granted
Nullarbor, WA	E69/3849	South Nullarbor	25 (70)	Au, Cu (IOCG)	Granted
Maneater Hill, QLD	EPM28038	Maneater Hill	19 (62.51)	Au, Cu, Ag, Pb	Granted
Palmerville, QLD	EPM11980	Limestone Creek	4 (13.2)	Cu, Au	Granted
Palmerville, QLD	EPM18325	Bald Hills	15 (49.4)	Cu, Au	Granted
Palmerville, QLD	EPM19537	Mitchell River South	33 (108.6)	Cu, Au	Granted
Palmerville, QLD	EPM26891	Palmerville North	63 (207.27)	Cu, Au	Granted
Palmerville, QLD	EPM26893	Palmerville West	100 (329)	Cu, Au	Granted
Palmerville, QLD	EPM26894	Palmerville East	84 (276.36)	Cu, Au	Granted
Palmerville, QLD	EPM26895	Palmerville South	63 (292.81)	Cu, Au	Granted
Palmerville, QLD	EPM27396	East Palmerville North	100 (329)	Cu, Au	Granted
Palmerville, QLD	EPM27452	East Palmerville South	65 (213.85)	Cu, Au	Granted
Eastern Goldfields, WA	E37/1362	Music Well	58 (162)	Au, Li	Granted
Eastern Goldfields, WA	E37/1363	Music Well	39 (109)	Au, Li	Granted
Eastern Goldfields, WA	E31/1203	Arcoona	61 (171)	Au, Li, Ni, REE	Granted
Eastern Goldfields, WA	E24/210	Mt Veters	35 (98)	Au, Li, Ni, REE	Granted
Nullarbor, WA	E69/4035	Mundra East	196 (548.8)	Au, Cu (IOCG)	In Application
Nullarbor, WA	E69/4036	Mundra West	151 (422.8)	Au, Cu (IOCG)	In Application
TOTAL			1,178 (3,651.2)		

ersonal use only

NMR Team

Board of Directors



James Walker,
GAICD, FCA, B.Comm
Non-Executive Chair



Blake Cannavo,
BAS
Managing Director and CEO



Philip Gardner,
FAICD, CPA, B.Comm
Non-Executive and Independent
Director

Company Secretary



Marika White,
GIA, MAICD
Company Secretary



Hasaka Martin,
M. Comm Law
Company Secretary

Management Team



Blake Cannavo,
BAS
Managing Director and CEO



Chris Jacobs, CPA, MBS,
BBus & BAS
Chief Financial Officer



Dr. Simon Richards,
PhD, MAusIMM, MAIG
Chief Geologist



Andrew Chung,
B. Eng, PMP, PMI-SP, PMI-RMP, PRINCE2
Project Services Manager

Nullarbor Projects (WA)

- The Nullarbor tenement portfolio is a collection of five tenements located in Western Australia's underexplored Nullarbor plain.
- Three are granted and two are in application - Mundra East E69-4035 and Mundra West E69-4036.
- Despite the relative shallow cover to the north (approximately 100m), the Nullarbor remains one of the last frontier exploration regions in Australia and a deposit is yet to be discovered there.
- NMR are aiming to change this record by undertaking a smart, focused but aggressive exploration campaign to become the first company to discover an economic deposit in the region.
- Completed Programs:
 - Completed Helios_DDHC001 @ 500m in Mar 2022
 - Completed Central_DDHC003 @ 551.4m in Aug 2022
 - Complete Helios_DDHC002 @ 1020m in Sep 2022
- Planned Helios Stage 3 DDH0003 and DDH004 in Q1 2023.



Current drill core (HELIOS_DDHC002) approximately 850m



Initial first pass observation of stage 2 hydrothermal alteration of host rocks. Initial observations indicate epidotechlorite-sericite +/- actinolite and biotite alteration. Diamond HQ drill core Central_DDHC003.

Maneater Hill (QLD)

- It is located over a mineralised breccia pipe approximately 100km west of Cairns and 35km northeast of the established mining town of Chillagoe.
- The target is a proven sulfide (metal sulfide)-bearing (Pb, Zn, Ag), porphyry-related breccia pipe which is recognised as a significant topographic high (Maneater Hill) centrally located within the tenement.
- NMR are comparing the Maneater to other mineralised breccia pipes in North Queensland.
- North Queensland is a proven geological setting for Gold-bearing breccia pipes including Mt Wright (>1 Moz Au); Mt Leyshon (>3.5 Moz Au); Kidston (>5 Moz Au)
- Ongoing drilling operation expected to wrap up in November 2022.
- Both Hole MPD002 and MPD003's core assay results are expected to be made available by the lab in December 2022 / January 2023.
- Plans for further work are in development and will be finalised once assay results are QAQC'd by the NMR geology team.



Massive sulfides (predominantly pyrite in this section of core) infilling altered meta-sandstone breccia. (MPD002 108.6m depth down hole).



Sulfide-rich breccias from its second diamond drill hole (MPD003) contains massive sulfides infilling the metasedimentary breccia fragments. All core is HQ3 diameter. Depth of sample is approximately 110m down hole.



Section of HQ drill core showing cavities with some sulfide infill between breccia fragments. MPD003 HQ3 diameter drill core between 110 and 118m.



Complex, sulfide-rich breccias from second diamond drill hole MPD003

Palmerville Project (QLD)

- The Palmerville Project covers an area of approximately 1,820 sq km in a series of semi-continuous tenements extending 130km from north-to-south and centered some 200 km north-west from Cairns and 100 km WNW from Mareeba in Far North Queensland.

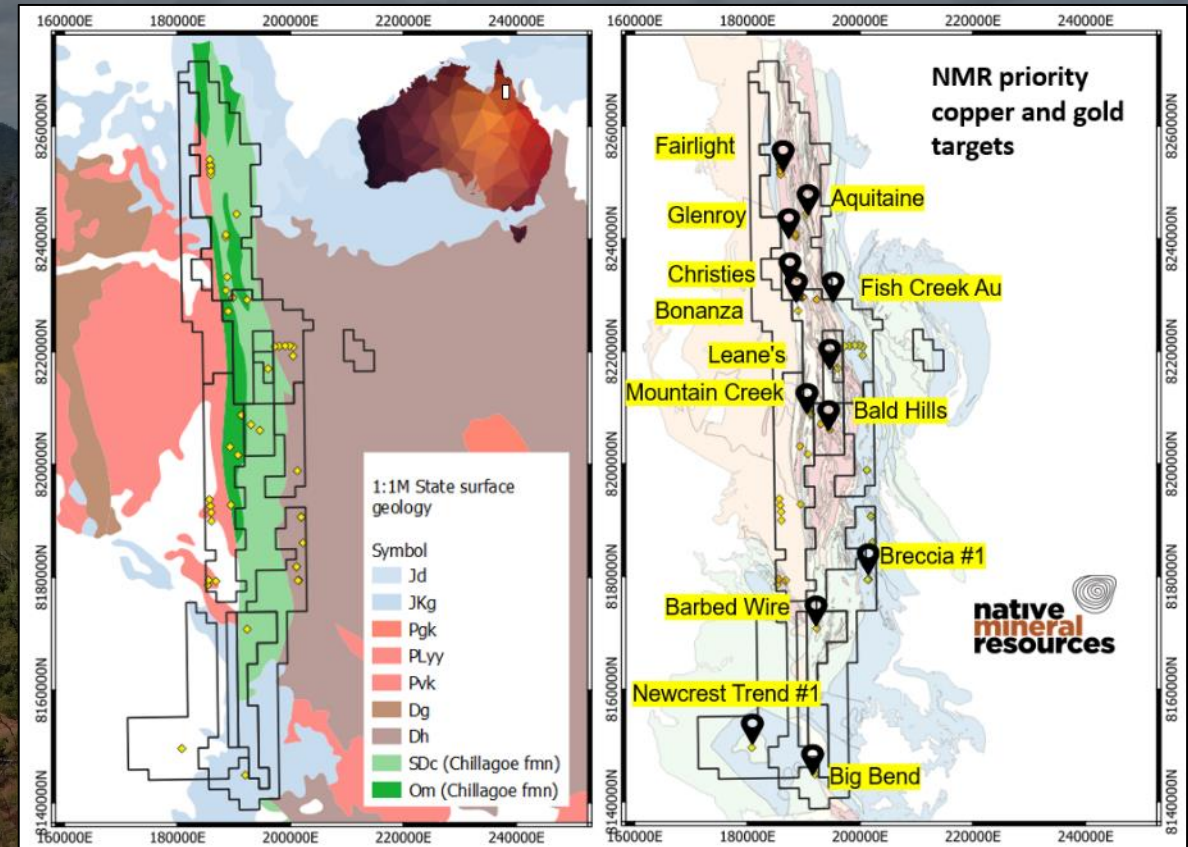
- The Palmerville Project is exceptional cluster of 9 EPM's along the extremely competitive and highly prospective Palmerville Fault and rocks of the Chillagoe Formation.

- The Project area covers units and margins of the Chillagoe Formation, which is the same geological host as the Mungana and Red-Dome copper-gold mines, located approximately 15 Km north of Chillagoe.

- Mungana Porphyry, Base metal 1.956 Mt @ 14.3% Zn, 2.8% Cu, 2.2% Pb, 188g/t Ag and 1.15g/t Au (inferred 2 Moz Au)

- Red Dome pre-mining reserve of 15 Mt @ 2.6 g/t Au

- Planned field works to follow up on >50 copper and gold targets in Q1 2023 and a regional airborne magnetics survey in Q2 2023 through CEI Grant.



Palmerville – Simplified geology map showing the Chillagoe formation in pale brown and other key geological units in the project area. NMR tenements are outlined in black. Priority targets (13) are highlighted with tags and respective names. In addition, other targets are shown as yellow points and mineral occurrences shown as red crosses. showing just a small selection of priority targets for NMR.

Music Well Projects (WA)

- Located 60 km north-northeast of Leonora and is accessible by the Leonora-Meekatharra Road.

Completed Stage 1A & 1B sampling campaign in Q1/Q2 2021

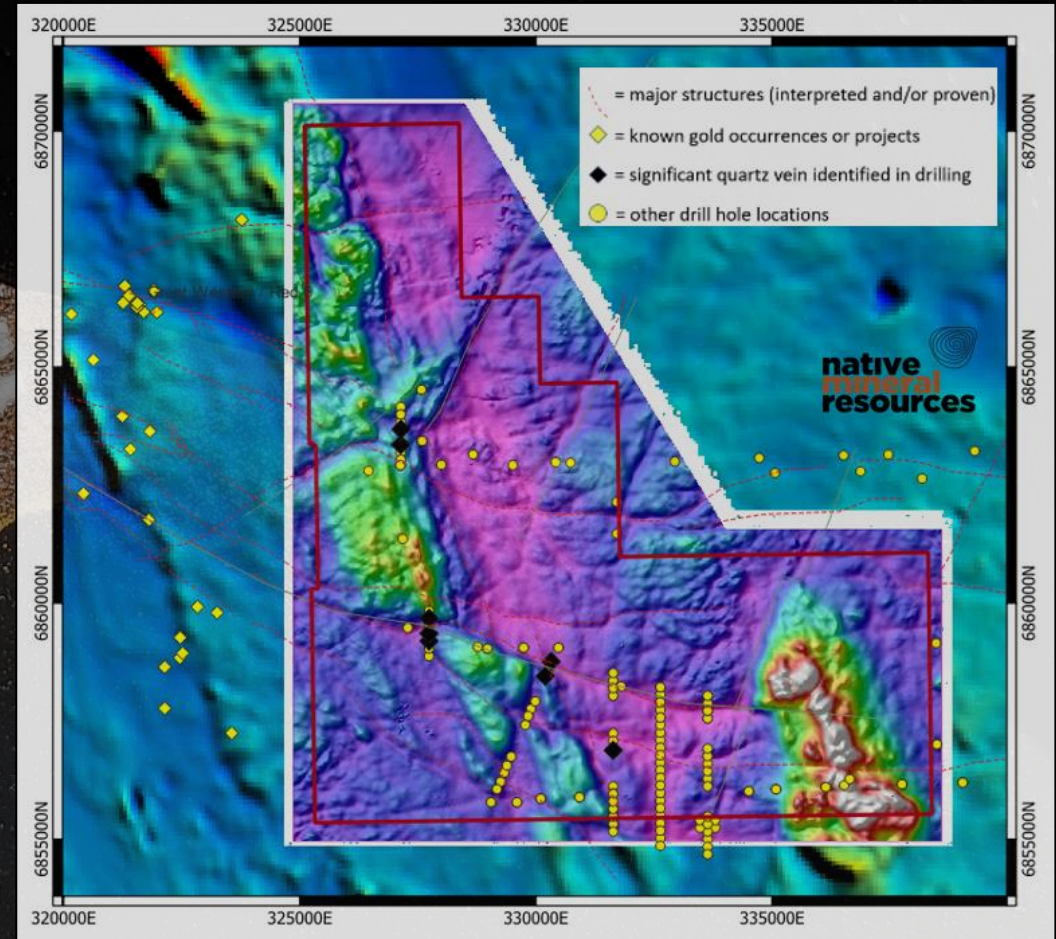
- Gold-bearing veins already discovered with gold anomalies, including visible gold and bonanza grades of over 140g/t Au, identified across the project identified for immediate follow up.

Completed EIS Co-funded diamond drilling in Q3 2021

- Results confirmed that the main target vein was intersected in all four holes approximately 50m downhole with up to 3.8m wide quartz vein recovered.
- A new quartz vein and massive sulphide vein have been discovered at 77-96m depth.

Completed high-resolution airborne (fixed wing) magnetics survey over E37/1363 in Q4 2021 with outstanding results.

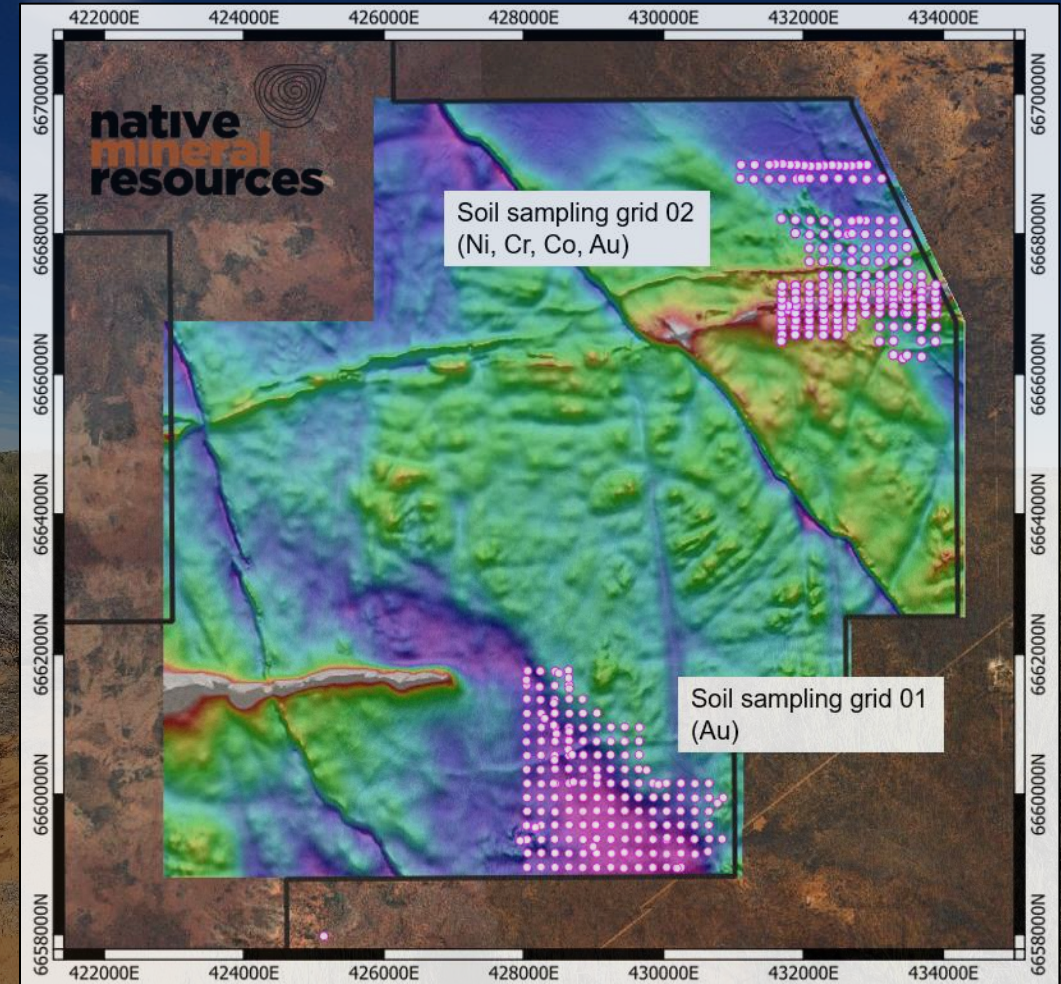
- Gold targets on E37/1363 lie along the eastern extensions of the same structures that host gold mines. Extremely prospective for significant high-grade, narrow vein gold.
- Targets generated during magnetics survey will be prioritised for follow-up field work.



Map showing the new acquired magnetics data. The image is magnetics TMI RTP and been colour graded with NW sun tilt angle to highlight major NE- and SW-trending structures. These structures host gold mineralisation and gold mines on the tenement to the east of Music well (<3km). Significant quartz veining has been identified in previous drilling with the quartz occurrences appearing to coincide with major structures as predicted by NMR. Background image is public available magnetic data.

Arcoona Project (WA)

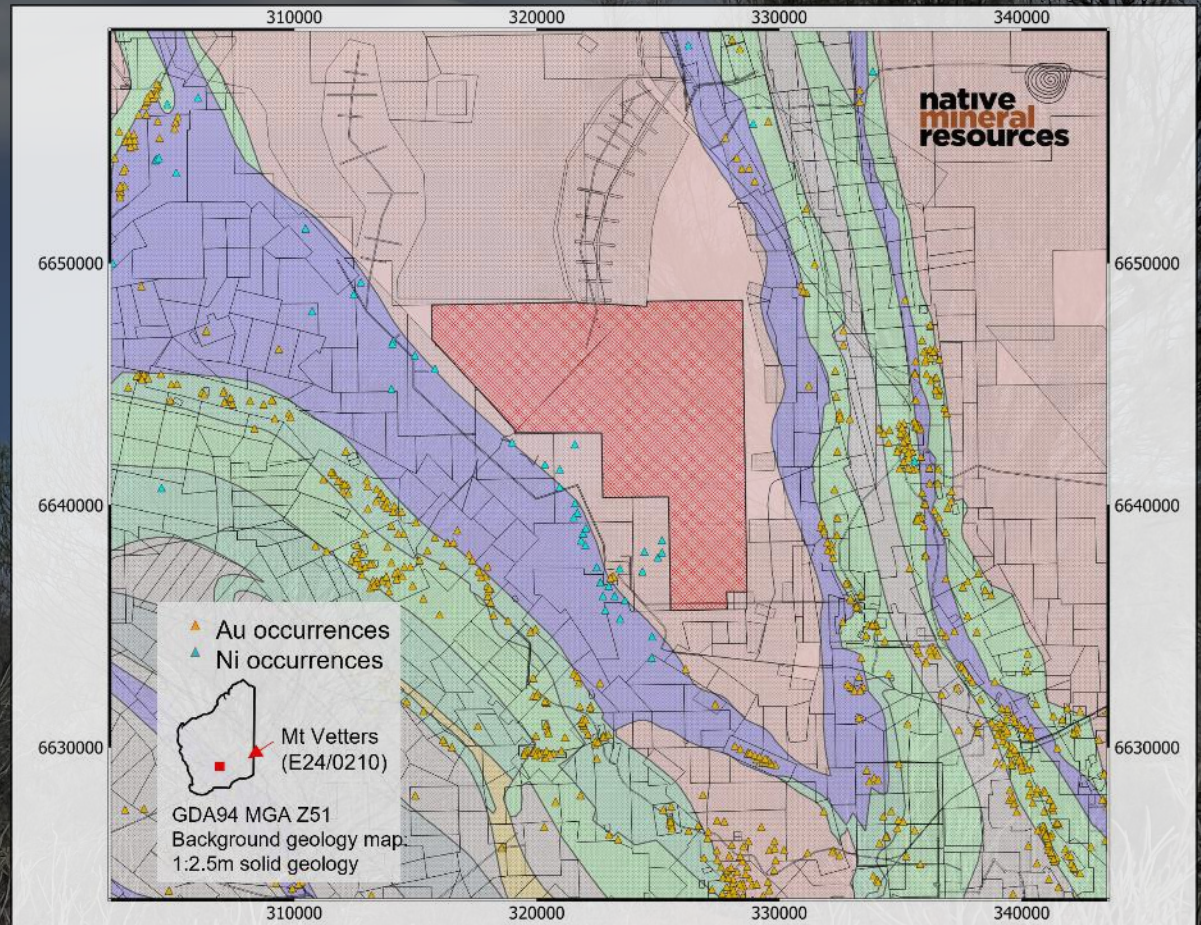
- Located approximately 4 km west of the Carosue Dam gold mine (>200,000 oz Au per annum gold production), reported to host 1.2 Moz of gold.
- Narrow vein gold potential under shallow cover but also opportunity for Ni, Cu, Co in, and adjacent to cross-cutting mafic dykes.
- New geophysics data identified new occurrences of greenstones (main gold-bearing rocks of the Yilgarn) extending into Arcoona and beneath cover in southern and Nepart of tenement.
- Proven Gold Anomalies (soil) in under explored terrain.
- Adjacent to major gold deposits - Surrounded by tenements held by large mining companies including Northern Stars Carouse Dam gold mine (ex Saracen) located only 5km to the east.
- Completed airborne magnetics in Dec 2021 and Soil Sampling in Apr 2022. Samples assayed, and results are currently under review and QAQC.
- Planned Aircore / RC Drilling in Q1 2023.



Map of the central part of the Arcoona project area showing the majority of soil sample points overlain on airborne magnetics TMI image. Magnetic data was collected by NMR in 2022.

Mt Veters (WA)

- Located approximately 50 km north-northwest of Kalgoorlie and 4 km west of the Goldfields Highway.
- Lies adjacent to multiple nickel and gold mines and in an area prospective for granite hosted Gold
 - Enterprise Gold Mine
 - Cawse Ni Mine
 - Bardoc Gold Mine
- Intrusion-hosted narrow vein gold and developing Rare Earth Element (REE) potential.
- The tenement is close to Kalgoorlie, the heart of mining country in the Yilgarn.
- Exploration for gold mineralisation associated with the Cawse monzogranite has been limited, but previous drilling has shown anomalous gold mineralisation present in aircore drilling within granite host rock over a 250 m length, with best results of 7 m @ 2.3 g/t Au.
- Planned Soil Sampling in Q1 2023.



Map showing the location of the Mt Veters tenement.

Summary Lookahead - 2H-FY2023 Exploration



WA Yilgarn (Eastern Goldfields)

E24-210 Mt Veters – Soil Sampling Planned in Feb 2023

- To pinpoint subtle but significant precious metal and REE anomalies at surface prior to a planned auger drilling campaign.

E31-1203 Arcoona – Aircore / RC Drilling Planned in Mar 2023

- Shallow but fast, Aircore drilling to follow up on potential geochemical anomalies highlighted in soil sampling. surface geochemical anomalies.
- Additional diamond drilling in Q3 2023 pending results from round 1 drilling. If positive results are returned, NMR may expedite drilling in order to reduce the time to deposit discovery.

WA Nullarbor

E69-3852 North Nullarbor – Phase 3 (DDH003 & DDH004) Planned in early 2023

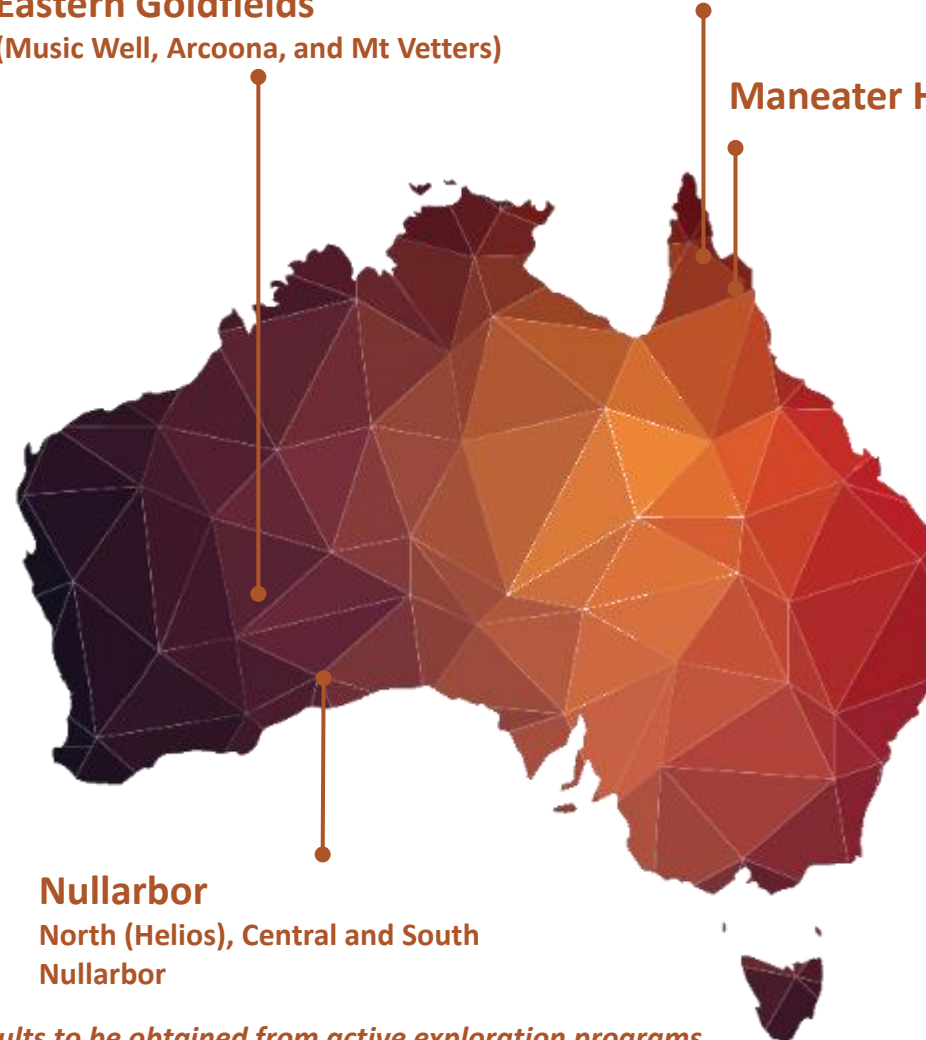
- 1000m & 800m, 2 Holes Diamond Drilling Campaign
- The proposed drill hole is currently under design and evaluation, pending lab assays results from Phase 2 Helios drilling.
- Subject to JV with majors

Note: proposed work program may vary depending on results to be obtained from active exploration programs

Eastern Goldfields (Music Well, Arcoona, and Mt Veters)

Palmerville Project

Maneater Hill



Nullarbor North (Helios), Central and South Nullarbor

QLD Palmerville

Field work planned for Palmerville targets in Q1 2023

- To follow up on >50 copper and gold targets.
- The fieldworks will provide NMR greater insight into mineralisation style , mineral extent , rock types and model assumptions.

Regional Palmerville Airborne Magnetics Survey Planned in Q2 2023

- NMR is investigating opportunities to complete the regional Magnetic Survey in 2023.
- Pending final survey design and parameters, the regional magnetic survey will provide the missing, foundation data allowing NMR, and other companies in the survey area and future companies to finally assess targets with the baseline data required to make sound, geologically consistent interpretations.
- In addition, it will provide the key data to fit into NMR current and future exploration and targeting program. NMR will use the magnetic and radiometric data to expedite target reconciliation and field-based target confirmation.

native mineral resources



Developing a new Australian based Copper
and Gold mining company.

NEW SOUTH WALES

Suite 10, 6-14 Clarence St, Port
Macquarie, NSW 2444



+61 2 6583 7833



info@nmresources.com.au



www.nmresources.com.au

QUEENSLAND

Suite 59, Level 54, 111 Eagle St,
Brisbane, Qld 4000